

LYN Monoclonal Antibody

Description

Product type	Antibody
Code	BT-MCA2980
Host	Mouse
Isotype	Mouse IgG2b
Size	100µL, 50µL
Immunogen	Purified recombinant fragment of LYN expressed in E. Coli.
Mol wt	56kDa
Species reactivity	Human
Clonality	Monoclonal
Recommended application	WB
Concentration	N/A
Full name	N/A
Synonyms	JTK8;FLJ26625

This product is for research use only, not for use in human, therapeutic or diagnostic procedure.

Background

Lyn (also known as p53/56 Lyn) is a membrane-associated protein tyrosine kinase (PTK) mostly expressed in hemopoietic cells which is important in cellular signaling. It contains an SH2 and SH3 domain and has been found to be cleaved after activation of caspases in apoptosis. A member of the Src family of PTKs, there are two known isoforms for Lyn which plays an indispensable role in the Fc epsilon RI (FceR1) and the B-cell IgM receptor signaling pathway and is essential for Syk activation and Lat phosphorylation after FceR1 aggregation and can also phosphor-ylate Tec on multiple residues. Lyn can also be regulated by IL-2 and IL-3. Lyn is a member of the src family of non-receptor protein tyrosine kinases that is predominantly expressed in haematopoietic tissues. Like all members of the src family, lyn is thought to participate in signal transduction from cell surface receptors that lack intrinsic tyrosine kinase activity. It is associated with a number of cell surface receptors including the B cell antigen receptor and immunoglobulin E receptor (FceRI).

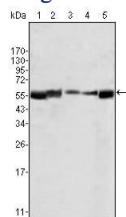
Recommended Dilution

WB: 1:500 - 1:2000

ELISA: 1:10000

Not yet tested in other applications.

Images



Western blot analysis using LYN mouse mAb againsts HL60 (1), L540 (2), SLLP-M2 (3), SEM (4) and Ramos (5) cell lysate.

Storage

Store at 4°C short term. Aliquot and store at -20°C long term.