

PMEL Monoclonal Antibody

Description

Product type	Antibody
Code	BT-MCA2982
Host	Mouse
Isotype	Mouse IgG1
Size	100µL, 50µL
Immunogen	Purified recombinant fragment of human PMEL (AA: 25-192) expressed in E. Coli.
Mol wt	70.2kDa
Species reactivity	Others
Clonality	Monoclonal
Recommended application	FCM
Concentration	N/A
Full name	N/A
Synonyms	P1;SI;SIL;ME20;P100;SILV;ME20M;gp100;ME20-M;PMEL17;D12S53E

This product is for research use only, not for use in human, therapeutic or diagnostic procedure.

Background

This gene encodes a melanocyte-specific type I transmembrane glycoprotein. The encoded protein is enriched in melanosomes, which are the melanin-producing organelles in melanocytes, and plays an essential role in the structural organization of premelanosomes. This protein is involved in generating internal matrix fibers that define the transition from Stage I to Stage II melanosomes. This protein undergoes a complex pattern of posttranslational processing and modification that is essential to the proper functioning of the protein. A secreted form of this protein that is released by proteolytic ectodomain shedding may be used as a melanoma-specific serum marker. Alternate splicing results in multiple transcript variants.

Recommended Dilution

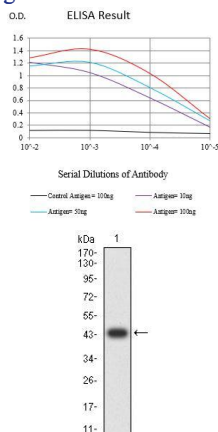
WB: 1:500 - 1:2000

FCM: 1:200 - 1:400

ELISA: 1:10000

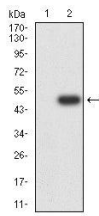
Not yet tested in other applications.

Images

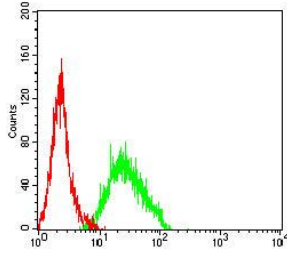


Black line: Control Antigen (100 ng);Purple line: Antigen (10ng); Blue line: Antigen (50 ng); Red line:Antigen (100 ng)

Western blot analysis using PMEL mAb against human PMEL (AA: 25-192) recombinant protein. (Expected MW is 44.7 kDa)



Western blot analysis using PMEL mAb against HEK293-6e (1) and PMEL (AA: 25-192)-hIgGFc transfected HEK293-6e (2) cell lysate.



Flow cytometric analysis of HL-60 cells using PMEL mouse mAb (green) and negative control (red).

Storage

Store at 4°C short term. Aliquot and store at -20°C long term.

501 Changsheng S Rd, Nanhu Dist, Jiaxing, Zhejiang, China

Tel: 86 21 31007137 | E-mail: save@bt-laboratory.com | www.bt-laboratory.com