

## TYRO3 Monoclonal Antibody

### Description

Product type	Antibody
Code	BT-MCA2985
Host	Mouse
Isotype	Mouse IgG1
Size	100µL, 50µL
Immunogen	Purified recombinant fragment of TYRO3 expressed in E. Coli.
Mol wt	N/A
Species reactivity	Human
Clonality	Monoclonal
Recommended application	ICC
Concentration	N/A
Full name	N/A
Synonyms	BYK;Brt;Dtk;RSE;Sky;Tif;FLJ16467

This product is for research use only, not for use in human, therapeutic or diagnostic procedure.

### Background

Tyrosine-protein kinase (TYRO3) belongs to the Tyr protein kinase family (AXL/UFO subfamily). The UFO family of receptor tyrosine kinases is comprised of subfamily members Rse(also referred to as Tyro3 or Sky) and UFO (also called Tyro7 or Axl). Two distinct isoforms of Rse, designated Brt and Etk-2, have been described. Brt differs from Rse at its C-terminus, but more importantly lacks the N-terminal 31 amino acid signal peptide sequence present in Rse, which is replaced by a 27 amino acid Brt-specific sequence. It has been suggested that as a result of this alternative splicing event, Brt resides in the cytoplasm, unlike Rse which is expressed on the cell surface. Ekt-2 also lacks an N-terminal signal peptide which is substituted with a 45 amino acid Ekt-2-specific sequence. Protein kinases mediate most of the signal transduction in eukaryotic cells, regulating cellular metabolism, transcription, cell cycle progression, cytoskeletal rearrangement and cell movement, apoptosis, and differentiation.

### Recommended Dilution

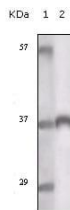
WB: 1:500 - 1:2000

ICC: 1:200 - 1:1000

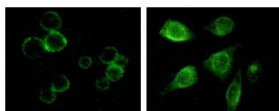
ELISA: 1:10000

Not yet tested in other applications.

### Images



Western blot analysis using TYRO3 mouse mAb against truncated TYRO3 recombinant protein.



Immunofluorescence staining of methanol-fixed MCF-7 and HepG2 cells showing membrane and cytoplasmic localization.

### Storage

Store at 4°C short term. Aliquot and store at -20°C long term.

501 Changsheng S Rd, Nanhu Dist, Jiaxing, Zhejiang, China  
Tel: 86 21 31007137 | E-mail: [save@bt-laboratory.com](mailto:save@bt-laboratory.com) | [www.bt-laboratory.com](http://www.bt-laboratory.com)