

CSNK2B Monoclonal Antibody

Description

Product type	Antibody
Code	BT-MCA2988
Host	Mouse
Isotype	Mouse IgG1
Size	100µL, 50µL
Immunogen	Purified recombinant fragment of human CSNK2B (AA: FULL(1-215)) expressed in E. Coli.
Mol wt	25kDa
Species reactivity	Human
Clonality	Monoclonal
Recommended application	WB,FCM
Concentration	N/A
Full name	N/A
Synonyms	G5A;CK2B;CK2N;CSK2B

This product is for research use only, not for use in human, therapeutic or diagnostic procedure.

Background

This gene encodes the beta subunit of casein kinase II, a ubiquitous protein kinase which regulates metabolic pathways, signal transduction, transcription, translation, and replication. The enzyme is composed of three subunits, alpha, alpha prime and beta, which form a tetrameric holoenzyme. The alpha and alpha prime subunits are catalytic, while the beta subunit serves regulatory functions. The enzyme localizes to the endoplasmic reticulum and the Golgi apparatus. Two transcript variants encoding different isoforms have been found for this gene.

Recommended Dilution

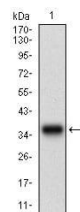
WB: 1:500 - 1:2000

FCM: 1:200 - 1:400

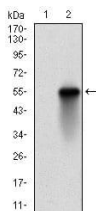
ELISA: 1:10000

Not yet tested in other applications.

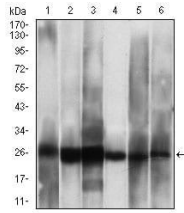
Images



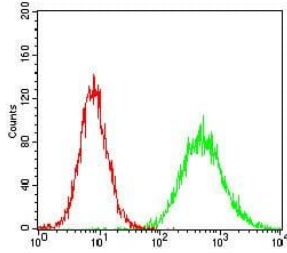
Western blot analysis using CSNK2B mAb against human CSNK2B (AA: FULL(1-215)) recombinant protein. (Expected MW is 35 kDa)



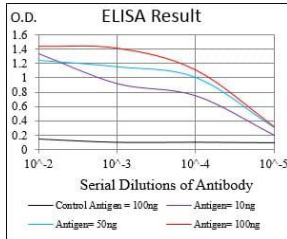
Western blot analysis using CSNK2B mAb against HEK293 (1) and CSNK2B (AA: FULL(1-215))-hIgGFc transfected HEK293 (2) cell lysate.



Western blot analysis using CSNK2B mouse mAb against HeLa (1), Jurkat (2), C6 (3), MCF-7 (4), SK-N-SH (5), NTERA-2 (6) cell lysate.



Flow cytometric analysis of HeLa cells using CSNK2B mouse mAb (green) and negative control (red).



Black line: Control Antigen (100 ng); Purple line: Antigen(10ng); Blue line: Antigen (50 ng); Red line: Antigen (100 ng);

Storage

Store at 4°C short term. Aliquot and store at -20°C long term.

501 Changsheng S Rd, Nanhu Dist, Jiaxing, Zhejiang, China

Tel: 86 21 31007137 | E-mail: save@bt-laboratory.com | www.bt-laboratory.com