

## MSH2 Monoclonal Antibody

### Description

<b>Product type</b>	Antibody
<b>Code</b>	BT-MCA2993
<b>Host</b>	Mouse
<b>Isotype</b>	Mouse IgG1
<b>Size</b>	100µL, 50µL
<b>Immunogen</b>	Purified recombinant fragment of human MSH2 (AA: 2-151) expressed in E. Coli.
<b>Mol wt</b>	104.7kDa
<b>Species reactivity</b>	Others
<b>Clonality</b>	Monoclonal
<b>Recommended application</b>	ICC,FCM
<b>Concentration</b>	N/A
<b>Full name</b>	N/A
<b>Synonyms</b>	FCC1;COCA1;HNPCC;LCFS2;hMSH2;HNPCC1

This product is for research use only, not for use in human, therapeutic or diagnostic procedure.

### Background

This locus is frequently mutated in hereditary nonpolyposis colon cancer (HNPCC). When cloned, it was discovered to be a human homolog of the E. coli mismatch repair gene mutS, consistent with the characteristic alterations in microsatellite sequences (RER+ phenotype) found in HNPCC. Two transcript variants encoding different isoforms have been found for this gene.

### Recommended Dilution

WB: 1:500 - 1:2000

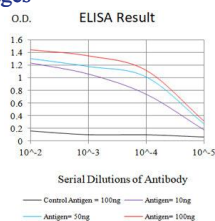
ICC: 1:200 - 1:1000

FCM: 1:200 - 1:400

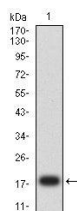
ELISA: 1:10000

Not yet tested in other applications.

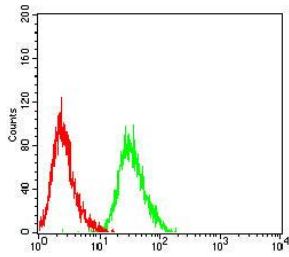
### Images



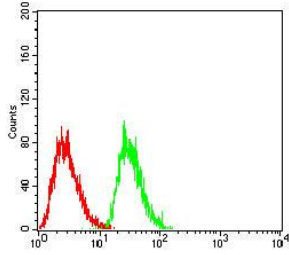
Black line: Control Antigen (100 ng);Purple line: Antigen (10ng); Blue line: Antigen (50 ng); Red line:Antigen (100 ng)



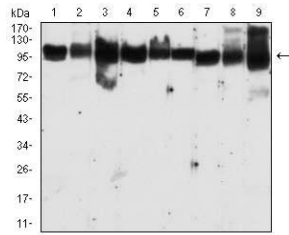
Western blot analysis using MSH2 mAb against human MSH2 (AA: 2-151) recombinant protein. (Expected MW is 19.6 kDa)



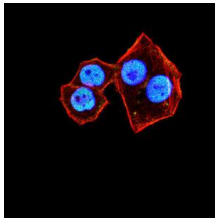
Flow cytometric analysis of HeLa cells using MSH2 mouse mAb (green) and negative control (red).



Flow cytometric analysis of HepG2 cells using MSH2 mouse mAb (green) and negative control (red).



Western blot analysis using MSH2 mouse mAb against MCF-7 (1), A431 (2), K562 (3), HeLa (4), Raji (5), A549 (6), NIH/3T3 (7), cos-7 (8), and Hek293-e6 (9) cell lysate.



Immunofluorescence analysis of HeLa cells using MSH2 mouse mAb (green). Blue: DRAQ5 fluorescent DNA dye. Red: Actin filaments have been labeled with Alexa Fluor- 555 phalloidin. Secondary antibody from Fisher (Cat#: 35503)

## Storage

Store at 4°C short term. Aliquot and store at -20°C long term.

501 Changsheng S Rd, Nanhu Dist, Jiaxing, Zhejiang, China

Tel: 86 21 31007137 | E-mail: [save@bt-laboratory.com](mailto:save@bt-laboratory.com) | [www.bt-laboratory.com](http://www.bt-laboratory.com)