

B2M Monoclonal Antibody

Description

Product type	Antibody
Code	BT-MCA3002
Host	Mouse
Isotype	Mouse IgG2a
Size	100μL, 50μL
Immunogen	Purified recombinant fragment of human B2M (AA: 21-100) expressed in E. Coli.
Mol wt	13.7kDa
Species reactivity	Human
Clonality	Monoclonal
Recommended application	WB,IHC,FCM
Concentration	N/A
Full name	N/A
Synonyms	N/A

This product is for research use only, not for use in human, therapeutic or diagnostic procedure.

Background

N/A

Recommended Dilution

WB: 1:500 - 1:2000

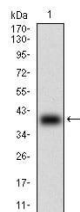
IHC-p: 1:200 - 1:1000

FCM: 1:200 - 1:400

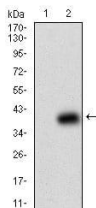
ELISA: 1:10000

Not yet tested in other applications.

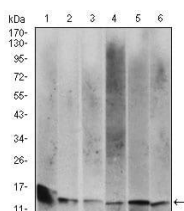
Images



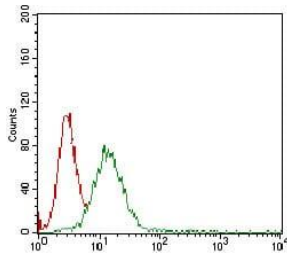
Western blot analysis using B2M mAb against human B2M (AA: 21-100) recombinant protein.
(Expected MW is 35.4 kDa)



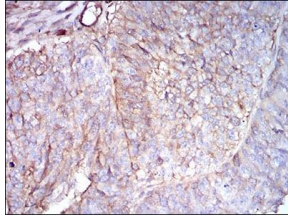
Western blot analysis using B2M mAb against HEK293 (1) and B2M (AA: 21-100)-hIgGFc transfected HEK293 (2) cell lysate.



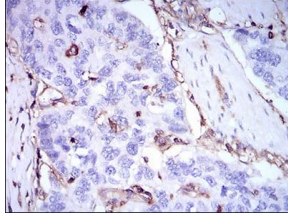
Western blot analysis using B2M mouse mAb against HeLa (1), HEK293 (2), HepG2 (3), RAJI (4), A431 (5) and Jurkat (6) cell lysate.



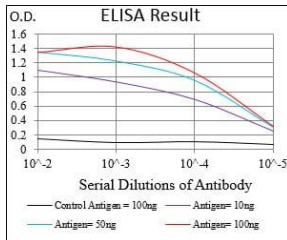
Flow cytometric analysis of A431 cells using B2M mouse mAb (green) and negative control (red).



Immunohistochemical analysis of paraffin-embedded ovarian cancer tissues using B2M mouse mAb with DAB staining.



Immunohistochemical analysis of paraffin-embedded esophageal cancer tissues using B2M mouse mAb with DAB staining.



Black line: Control Antigen (100 ng); Purple line: Antigen(10ng); Blue line: Antigen (50 ng); Red line: Antigen (100 ng);

Storage

Store at 4°C short term. Aliquot and store at -20°C long term.

501 Changsheng S Rd, Nanhu Dist, Jiaxing, Zhejiang, China

Tel: 86 21 31007137 | E-mail: save@bt-laboratory.com | www.bt-laboratory.com