

## DIS3L2 Monoclonal Antibody

### Description

<b>Product type</b>	Antibody
<b>Code</b>	BT-MCA3006
<b>Host</b>	Mouse
<b>Isotype</b>	Mouse IgG1
<b>Size</b>	100µL, 50µL
<b>Immunogen</b>	Purified recombinant fragment of human DIS3L2 (AA: 27-250) expressed in E. Coli.
<b>Mol wt</b>	99.3kDa
<b>Species reactivity</b>	Human
<b>Clonality</b>	Monoclonal
<b>Recommended application</b>	WB,IHC,FCM
<b>Concentration</b>	N/A
<b>Full name</b>	N/A
<b>Synonyms</b>	FAM6A;PRLMNS

This product is for research use only, not for use in human, therapeutic or diagnostic procedure.

### Background

N/A

### Recommended Dilution

WB: 1:500 - 1:2000

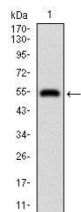
IHC-p: 1:200 - 1:1000

FCM: 1:200 - 1:400

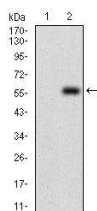
ELISA: 1:10000

Not yet tested in other applications.

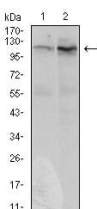
### Images



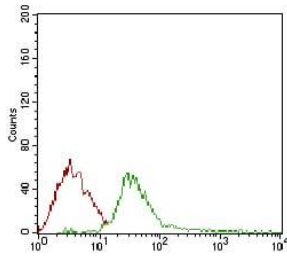
Western blot analysis using DIS3L2 mAb against human DIS3L2 recombinant protein. (Expected MW is 50.2 kDa)



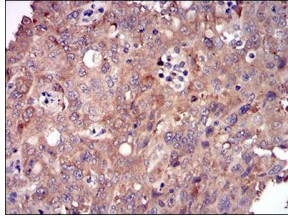
Western blot analysis using DIS3L2 mAb against HEK293 (1) and DIS3L2 (AA: 27-250)-hIgGFc transfected HEK293 (2) cell lysate.



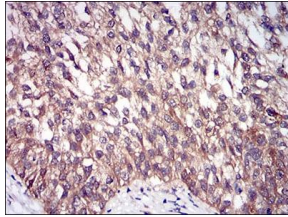
Western blot analysis using DIS3L2 mouse mAb against Hela (1) and HepG2 (2) cell lysate.



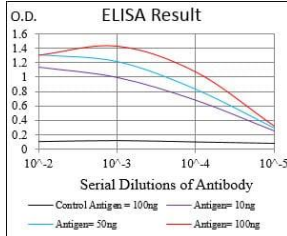
Flow cytometric analysis of Jurkat cells using DIS3L2 mouse mAb (green) and negative control (red).



Immunohistochemical analysis of paraffin-embedded endometrial cancer tissues using DIS3L2 mouse mAb with DAB staining.



Immunohistochemical analysis of paraffin-embedded bladder cancer tissues using DIS3L2 mouse mAb with DAB staining.



Black line: Control Antigen (100 ng); Purple line: Antigen(10ng); Blue line: Antigen (50 ng); Red line: Antigen (100 ng);

## Storage

Store at 4°C short term. Aliquot and store at -20°C long term.

501 Changsheng S Rd, Nanhu Dist, Jiaxing, Zhejiang, China

Tel: 86 21 31007137 | E-mail: save@bt-laboratory.com | www.bt-laboratory.com