

ALCAM Monoclonal Antibody

Description

| | |
|--------------------------------|--|
| Product type | Antibody |
| Code | BT-MCA3031 |
| Host | Mouse |
| Isotype | Mouse IgG2a |
| Size | 100µL, 50µL |
| Immunogen | Purified recombinant fragment of ALCAM (aa405-524) expressed in E. Coli. |
| Mol wt | N/A |
| Species reactivity | Human |
| Clonality | Monoclonal |
| Recommended application | Others |
| Concentration | N/A |
| Full name | N/A |
| Synonyms | MEMD;CD166 |

This product is for research use only, not for use in human, therapeutic or diagnostic procedure.

Background

ALCAM(CD166): Activated leukocyte cell adhesion molecule. CD166 is a member of the Ig superfamily and is expressed on activated T-cells, B cells and other cells including thymic epithelial cells, fibroblasts, keratinocytes and neurons. CD6 has been identified as a receptor for CD166.

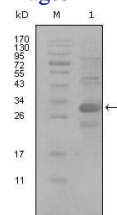
Recommended Dilution

WB: 1:500 - 1:2000

ELISA: 1:10000

Not yet tested in other applications.

Images



Western blot analysis using ALCAM mouse mAb against truncated Trx-ALCAM recombinant protein (1).

Storage

Store at 4°C short term. Aliquot and store at -20°C long term.