

CD328 Monoclonal Antibody

Description

Product type	Antibody
Code	BT-MCA3049
Host	Mouse
Isotype	Mouse IgG1
Size	100µL, 50µL
Immunogen	Purified recombinant fragment of human CD328 (AA: extra(19-142)) expressed in E. Coli.
Mol wt	51.1kDa
Species reactivity	Others
Clonality	Monoclonal
Recommended application	IHC,FCM
Concentration	N/A
Full name	N/A
Synonyms	p75;QA79;AIRM1;CD328;AIRM-1;CDw328;D-siglec;SIGLEC-7;SIGLECP2;SIGLEC19P;p75/AIRM1

This product is for research use only, not for use in human, therapeutic or diagnostic procedure.

Background

SIGLEC7 (Sialic Acid Binding Ig Like Lectin 7) is a Protein Coding gene. Diseases associated with SIGLEC7 include Congenital Disorder Of Glycosylation, Type Iic. Among its related pathways are Hematopoietic Stem Cells and Lineage-specific Markers and Innate Immune System. Gene Ontology (GO) annotations related to this gene include carbohydrate binding. An important paralog of this gene is SIGLEC12.

Recommended Dilution

WB: 1:500 - 1:2000

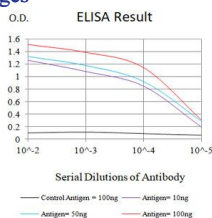
IHC-p: 1:200-1:1000

FCM: 1:200-1:400

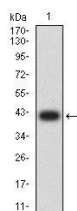
ELISA: 1:10000

Not yet tested in other applications.

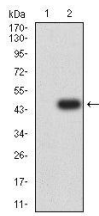
Images



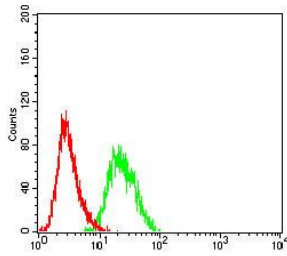
Black line: Control Antigen (100 ng);Purple line: Antigen (10ng); Blue line: Antigen (50 ng); Red line: Antigen (100 ng)



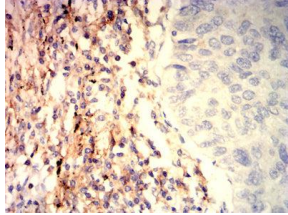
Western blot analysis using CD328 mAb against human CD328 (AA: extra(19-142)) recombinant protein. (Expected MW is 40.2 kDa)



Western blot analysis using CD328 mAb against HEK293-6e (1) and CD328 (AA: extra(19-142))-hlgGfc transfected HEK293-6e (2) cell lysate.



Flow cytometric analysis of HL-60 cells using CD328 mouse mAb (green) and negative control (red).



Immunohistochemical analysis of paraffin-embedded lung cancer tissues using CD328 mouse mAb with DAB staining.

Storage

Store at 4°C short term. Aliquot and store at -20°C long term.

501 Changsheng S Rd, Nanhu Dist, Jiaxing, Zhejiang, China

Tel: 86 21 31007137 | E-mail: save@bt-laboratory.com | www.bt-laboratory.com