

GPR15 Monoclonal Antibody

Description

Product type	Antibody
Code	BT-MCA3054
Host	Mouse
Isotype	Mouse IgG2b
Size	100µL, 50µL
Immunogen	Purified recombinant fragment of human GPR15 (AA: extra mix) expressed in E. Coli.
Mol wt	40.8kda
Species reactivity	Others
Clonality	Monoclonal
Recommended application	ICC,FCM
Concentration	N/A
Full name	N/A
Synonyms	BOB

This product is for research use only, not for use in human, therapeutic or diagnostic procedure.

Background

This gene product is a member of a group of related serine proteases from the cytoplasmic granules of cytotoxic lymphocytes. Cytolytic T lymphocytes (CTL) and natural killer (NK) cells share the remarkable ability to recognize, bind, and lyse specific target cells. They are thought to protect their host by lysing cells bearing on their surface 'nonself' antigens, usually peptides or proteins resulting from infection by intracellular pathogens. The protein described here lacks consensus sequences for N-glycosylation present in other granzymes. [provided by RefSeq, Jul 2008]

Recommended Dilution

WB: 1:500 - 1:2000

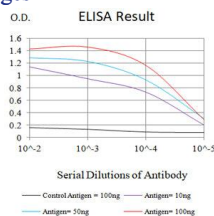
ICC: 1:200 - 1:1000

FCM: 1:200 - 1:400

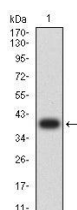
ELISA: 1:10000

Not yet tested in other applications.

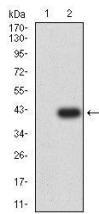
Images



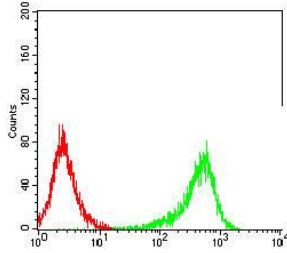
Black line: Control Antigen (100 ng);Purple line: Antigen (10ng); Blue line: Antigen (50 ng); Red line:Antigen (100 ng)



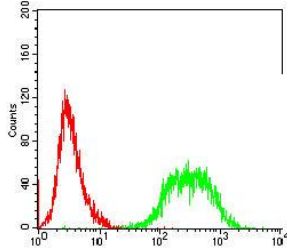
Western blot analysis using GPR15 mAb against human GPR15 (AA: extra mix) recombinant protein. (Expected MW is 38.3kDa)



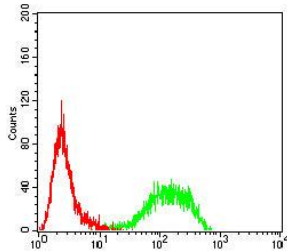
Western blot analysis using GPR15 mAb against HEK293-6e (1) and GPR15 (AA: extra mix)-hlgGfc transfected HEK293-6e (2) cell lysate.



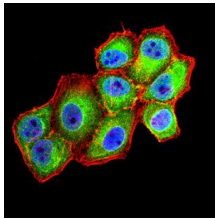
Flow cytometric analysis of Raji cells using GPR15 mouse mAb (green) and negative control (red).



Flow cytometric analysis of Jurkat cells using GPR15 mouse mAb (green) and negative control (red).



Flow cytometric analysis of THP-1 cells using GPR15 mouse mAb (green) and negative control (red).



Immunofluorescence analysis of HeLa cells using GPR15 mouse mAb (green). Blue: DRAQ5 fluorescent DNA dye. Red: Actin filaments have been labeled with Alexa Fluor- 555 phalloidin. Secondary antibody from Fisher (Cat#: 35503)

Storage

Store at 4°C short term. Aliquot and store at -20°C long term.

501 Changsheng S Rd, Nanhu Dist, Jiaxing, Zhejiang, China

Tel: 86 21 31007137 | E-mail: save@bt-laboratory.com | www.bt-laboratory.com