

KIR3DL1 Monoclonal Antibody

Description

Product type	Antibody
Code	BT-MCA3056
Host	Mouse
Isotype	Mouse IgG2b
Size	100µL, 50µL
Immunogen	Purified recombinant fragment of human KIR3DL1 (AA: extra 22-340) expressed in Hek293 cells.
Mol wt	49kDa
Species reactivity	Human,Monkey,Rat
Clonality	Monoclonal
Recommended application	WB,IHC
Concentration	N/A
Full name	N/A
Synonyms	KIR;NKB1;NKAT3;NKB1B;NKAT-3;CD158E1;KIR3DL1/S1

This product is for research use only, not for use in human, therapeutic or diagnostic procedure.

Background

N/A

Recommended Dilution

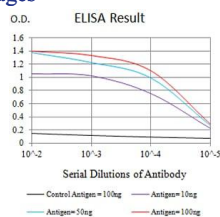
WB: 1:500 - 1:2000

IHC-p: 1:200 - 1:1000

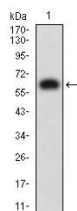
ELISA: 1:10000

Not yet tested in other applications.

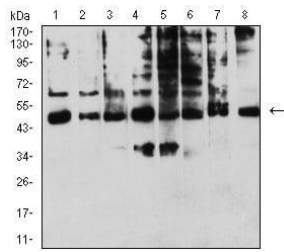
Images



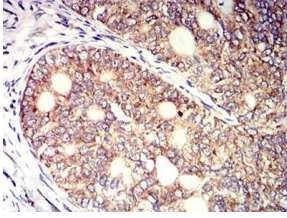
Black line: Control Antigen (100 ng);Purple line: Antigen (10ng); Blue line: Antigen (50 ng); Red line:Antigen (100 ng)



Western blot analysis using KIR3DL1 mAb against human KIR3DL1 (AA: extra 22-340) recombinant protein. (Expected MW is 65 kDa)



Western blot analysis using KIR3DL1 mouse mAb against A431 (1), Raji (2), SPC-A-1 (3), K562 (4), HEK293 (5), U937 (6), C6 (7), and COS7 (8) cell lysate.



Immunohistochemical analysis of paraffin-embedded cervical cancer tissues using KIR3DL1 mouse mAb with DAB staining.

Storage

Store at 4°C short term. Aliquot and store at -20°C long term.

501 Changsheng S Rd, Nanhu Dist, Jiaxing, Zhejiang, China

Tel: 86 21 31007137 | E-mail: save@bt-laboratory.com | www.bt-laboratory.com