

## CD226 Monoclonal Antibody

### Description

|                                |   |
|--------------------------------|---|
| <b>Product type</b>            | Antibody  |
| <b>Code</b>                    | BT-MCA3094  |
| <b>Host</b>                    | Mouse   |
| <b>Isotype</b>                 | Mouse IgG1  |
| <b>Size</b>                    | 100µL, 50µL   |
| <b>Immunogen</b>               | Purified recombinant fragment of human CD226 (AA: extra 19-254) expressed in E. Coli. |
| <b>Mol wt</b>                  | 38.6kDa   |
| <b>Species reactivity</b>      | Others  |
| <b>Clonality</b>               | Monoclonal  |
| <b>Recommended application</b> | IHC,FCM   |
| <b>Concentration</b>           | N/A   |
| <b>Full name</b>               | N/A   |
| <b>Synonyms</b>                | PTA1;DNAM1;DNAM-1;TLISA1  |

This product is for research use only, not for use in human, therapeutic or diagnostic procedure.

### Background

This gene encodes a glycoprotein expressed on the surface of NK cells, platelets, monocytes and a subset of T cells. It is a member of the Ig-superfamily containing 2 Ig-like domains of the V-set. The protein mediates cellular adhesion of platelets and megakaryocytic cells to vascular endothelial cells. The protein also plays a role in megakaryocytic cell maturation. Alternative splicing results in multiple transcript variants.

### Recommended Dilution

WB: 1:500 - 1:2000

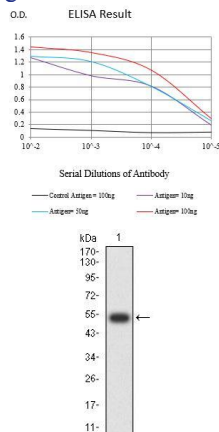
IHC-p: 1:200 - 1:1000

FCM: 1:200 - 1:400

ELISA: 1:10000

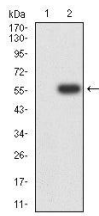
Not yet tested in other applications.

### Images

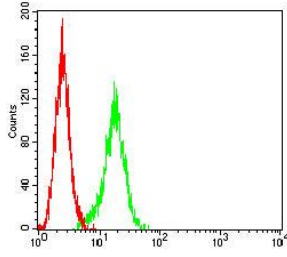


Black line: Control Antigen (100 ng);Purple line: Antigen (10ng); Blue line: Antigen (50 ng); Red line:Antigen (100 ng)

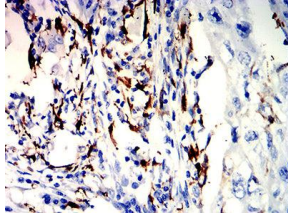
Western blot analysis using CD226 mAb against human CD226 (AA: extra 19-254) recombinant protein. (Expected MW is 52.7 kDa)



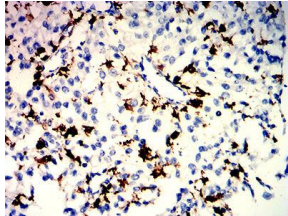
Western blot analysis using CD226 mAb against HEK293-6e (1) and CD226 (AA: extra 19-254)-hlgGFc transfected HEK293-6e (2) cell lysate.



Flow cytometric analysis of THP-1 cells using CD226 mouse mAb (green) and negative control (red).



Immunohistochemical analysis of paraffin-embedded lung cancer tissues using CD226 mouse mAb with DAB staining.



Immunohistochemical analysis of paraffin-embedded kidney cancer tissues using CD226 mouse mAb with DAB staining.

### Storage

Store at 4°C short term. Aliquot and store at -20°C long term.

501 Changsheng S Rd, Nanhu Dist, Jiaxing, Zhejiang, China

Tel: 86 21 31007137 | E-mail: [save@bt-laboratory.com](mailto:save@bt-laboratory.com) | [www.bt-laboratory.com](http://www.bt-laboratory.com)