

EIF5A Monoclonal Antibody

Description

Product type	Antibody
Code	BT-MCA3105
Host	Mouse
Isotype	Mouse IgG1
Size	100µL, 50µL
Immunogen	Purified recombinant fragment of human EIF5A (AA: full(1-154)) expressed in E. Coli.
Mol wt	16.8kDa
Species reactivity	Human
Clonality	Monoclonal
Recommended application	IHC,ICC,FCM
Concentration	N/A
Full name	N/A
Synonyms	EIF-5A;EIF5A1;eIF5A1

This product is for research use only, not for use in human, therapeutic or diagnostic procedure.

Background

EIF5A (eukaryotic translation initiation factor 5A) is a protein-coding gene. Diseases associated with EIF5A include lung adenocarcinoma, and intrahepatic cholangiocarcinoma, and among its related super-pathways are Post-translational protein modification and Apoptotic Pathways in Synovial Fibroblasts. GO annotations related to this gene include ribosome binding and RNA binding. An important paralog of this gene is EIF5AL1.

Recommended Dilution

WB: 1:500 - 1:2000

IHC-p: 1:200 - 1:1000

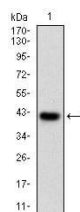
ICC: 1:200 - 1:1000

FCM: 1:200 - 1:400

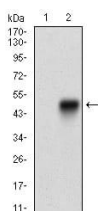
ELISA: 1:10000

Not yet tested in other applications.

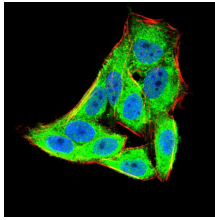
Images



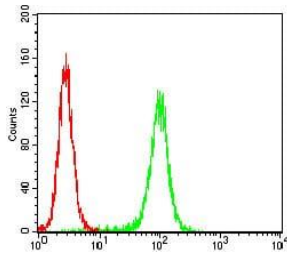
Western blot analysis using EIF5A mAb against human EIF5A (AA: full(1-154)) recombinant protein. (Expected MW is 42.8 kDa)



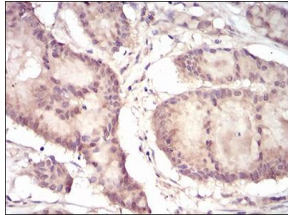
Western blot analysis using EIF5A mAb against HEK293 (1) and EIF5A (AA: full(1-154))-hIgGfc transfected HEK293 (2) cell lysate.



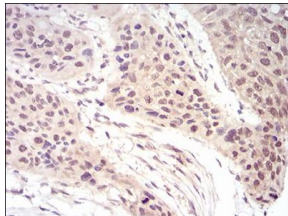
Immunofluorescence analysis of HeLa cells using EIF5A mouse mAb (green). Blue: DRAQ5 fluorescent DNA dye. Red: Actin filaments have been labeled with Alexa Fluor- 555 phalloidin. Secondary antibody from Fisher (Cat#: 35503)



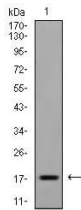
Flow cytometric analysis of HeLa cells using EIF5A mouse mAb (green) and negative control (red).



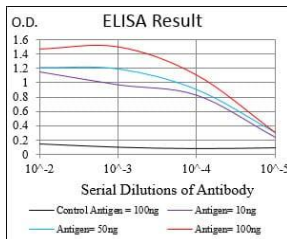
Immunohistochemical analysis of paraffin-embedded colon cancer tissues using EIF5A mouse mAb with DAB staining.



Immunohistochemical analysis of paraffin-embedded esophageal cancer tissues using EIF5A mouse mAb with DAB staining.



Western blot analysis using EIF5A mouse mAb against Raji (1) cell lysate.



Black line: Control Antigen (100 ng); Purple line: Antigen(10ng); Blue line: Antigen (50 ng); Red line: Antigen (100 ng);

Storage

Store at 4°C short term. Aliquot and store at -20°C long term.

501 Changsheng S Rd, Nanhu Dist, Jiaxing, Zhejiang, China

Tel: 86 21 31007137 | E-mail: save@bt-laboratory.com | www.bt-laboratory.com