

TWIST1 Monoclonal Antibody

Description

| | |
|--------------------------------|--|
| Product type | Antibody |
| Code | BT-MCA3108 |
| Host | Mouse |
| Isotype | Mouse IgG1 |
| Size | 100µL, 50µL |
| Immunogen | Purified recombinant fragment of human TWIST1 (AA: 9-74) expressed in E. Coli. |
| Mol wt | 21kDa |
| Species reactivity | Human,Mouse |
| Clonality | Monoclonal |
| Recommended application | WB,IHC,ICC,FCM |
| Concentration | N/A |
| Full name | N/A |
| Synonyms | SCS;ACS3;CRS1;BPES2;BPES3;TWIST1;bHLHa38 |

This product is for research use only, not for use in human, therapeutic or diagnostic procedure.

Background

N/A

Recommended Dilution

WB: 1:500 - 1:2000

IHC-p: 1:200 - 1:1000

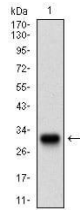
ICC: 1:200 - 1:1000

FCM: 1:200 - 1:400

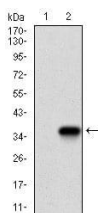
ELISA: 1:10000

Not yet tested in other applications.

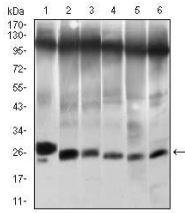
Images



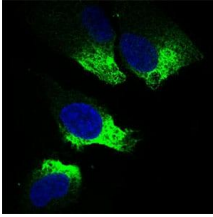
Western blot analysis using TWIST1 mAb against human TWIST1 recombinant protein. (Expected MW is 31.9 kDa)



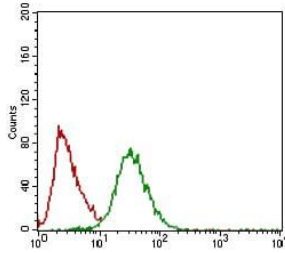
Western blot analysis using TWIST1 mAb against HEK293 (1) and TWIST1 (AA: 9-74)-hIgGFc transfected HEK293 (2) cell lysate.



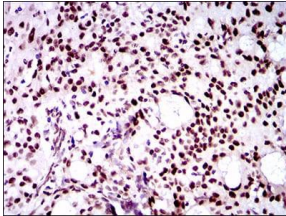
Western blot analysis using TWIST1 mouse mAb against NIH/3T3 (1), JURKAT (2), HELA (3), A549 (4), RAJI (5) and OCM-1 (6) cell lysate.



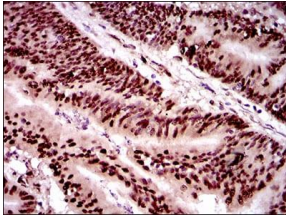
Immunofluorescence analysis of HeLa cells using TWIST1 mouse mAb (green). Blue: DRAQ5 fluorescent DNA dye.



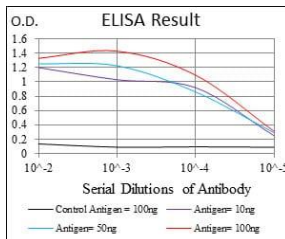
Flow cytometric analysis of HeLa cells using TWIST1 mouse mAb (green) and negative control (red).



Immunohistochemical analysis of paraffin-embedded cervical cancer tissues using TWIST1 mouse mAb with DAB staining.



Immunohistochemical analysis of paraffin-embedded colon cancer tissues using TWIST1 mouse mAb with DAB staining.



Black line: Control Antigen (100 ng); Purple line: Antigen(10ng); Blue line: Antigen (50 ng); Red line: Antigen (100 ng);

Storage

Store at 4°C short term. Aliquot and store at -20°C long term.

501 Changsheng S Rd, Nanhu Dist, Jiaxing, Zhejiang, China

Tel: 86 21 31007137 | E-mail: save@bt-laboratory.com | www.bt-laboratory.com