

## KSHV ORF26 Monoclonal Antibody

### Description

<b>Product type</b>	Antibody
<b>Code</b>	BT-MCA3110
<b>Host</b>	Mouse
<b>Isotype</b>	Mouse IgG1
<b>Size</b>	100μL, 50μL
<b>Immunogen</b>	Purified recombinant fragment of KSHV ORF26 expressed in E. Coli.
<b>Mol wt</b>	N/A
<b>Species reactivity</b>	Human
<b>Clonality</b>	Monoclonal
<b>Recommended application</b>	WB
<b>Concentration</b>	N/A
<b>Full name</b>	N/A
<b>Synonyms</b>	ORF26

This product is for research use only, not for use in human, therapeutic or diagnostic procedure.

### Background

Kaposi's sarcoma-associated herpesvirus (KSHV) belongs to the gamma-(2)-herpesvirus subfamily and has been closely linked to the Kaposi

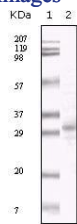
### Recommended Dilution

WB: 1:500 - 1:2000

ELISA: 1:10000

Not yet tested in other applications.

### Images



Western blot analysis using KSHV ORF26 mouse mAb against TPA induced BCBL-1 cell lysate.

### Storage

Store at 4°C short term. Aliquot and store at -20°C long term.

501 Changsheng S Rd, Nanhu Dist, Jiaxing, Zhejiang, China

Tel: 86 21 31007137 | E-mail: [save@bt-laboratory.com](mailto:save@bt-laboratory.com) | [www.bt-laboratory.com](http://www.bt-laboratory.com)