

CD235a Monoclonal Antibody

Description

Product type	Antibody
Code	BT-MCA3120
Host	Mouse
Isotype	Mouse IgG1
Size	100µL, 50µL
Immunogen	Purified recombinant fragment of human CD235a (AA: 20-91) expressed in E. Coli.
Mol wt	16.3kDa
Species reactivity	Human
Clonality	Monoclonal
Recommended application	FCM
Concentration	N/A
Full name	N/A
Synonyms	MN;GPA;MNS;GPSAT;PAS-2;GPErik;HGpMiV;HGpMiXI;HGpSta(C)

This product is for research use only, not for use in human, therapeutic or diagnostic procedure.

Background

Glycophorins A (GYPA) and B (GYPB) are major sialoglycoproteins of the human erythrocyte membrane which bear the antigenic determinants for the MN and Ss blood groups. In addition to the M or N and S or s antigens that commonly occur in all populations, about 40 related variant phenotypes have been identified. These variants include all the variants of the Miltenberger complex and several isoforms of Sta, as well as Dantu, Sat, He, Mg, and deletion variants Ena, S-s-U- and Mk. Most of the variants are the result of gene recombinations between GYPA and GYPB.

Recommended Dilution

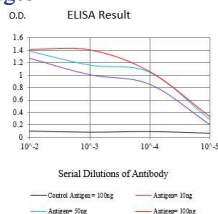
WB: 1:500 - 1:2000

FCM: 1:200 - 1:400

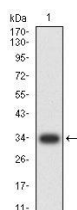
ELISA: 1:10000

Not yet tested in other applications.

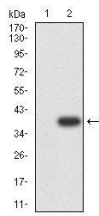
Images



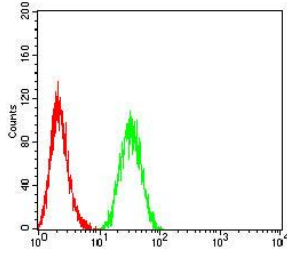
Black line: Control Antigen (100 ng);Purple line: Antigen (10ng); Blue line: Antigen (50 ng); Red line:Antigen (100 ng)



Western blot analysis using CD235a mAb against human CD235a (AA: 20-91) recombinant protein. (Expected MW is 34 kDa)



Western blot analysis using CD235a mAb against HEK293-6e (1) and CD235a (AA: 20-91)-hlgGfc transfected HEK293-6e (2) cell lysate.



Flow cytometric analysis of K562 cells using CD235a mouse mAb (green) and negative control (red).

Storage

Store at 4°C short term. Aliquot and store at -20°C long term.

501 Changsheng S Rd, Nanhu Dist, Jiaxing, Zhejiang, China

Tel: 86 21 31007137 | E-mail: save@bt-laboratory.com | www.bt-laboratory.com