

PARP Monoclonal Antibody

Description

Product type	Antibody
Code	BT-MCA3124
Host	Mouse
Isotype	Mouse IgG1
Size	100µL, 50µL
Immunogen	Synthetic peptide of human PARP, conjugated to KLH.
Mol wt	117kDa
Species reactivity	Human
Clonality	Monoclonal
Recommended application	WB,FCM
Concentration	N/A
Full name	N/A
Synonyms	PARP;PPOL;ADPRT;ADPRT1;PARP-1;pADPRT-1;PARP1

This product is for research use only, not for use in human, therapeutic or diagnostic procedure.

Background

This gene encodes a chromatin-associated enzyme, poly(ADP-ribosyl)transferase, which modifies various nuclear proteins by poly(ADP-ribosyl)ation. The modification is dependent on DNA and is involved in the regulation of various important cellular processes such as differentiation, proliferation, and tumor transformation and also in the regulation of the molecular events involved in the recovery of cell from DNA damage. In addition, this enzyme may be the site of mutation in Fanconi anemia, and may participate in the pathophysiology of type I diabetes.

Recommended Dilution

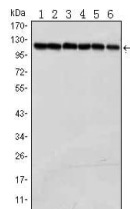
WB: 1:500 - 1:2000

FCM: 1:200 - 1:400

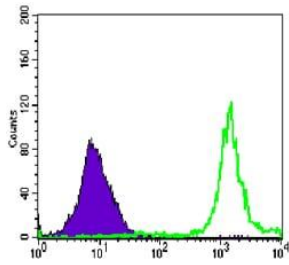
ELISA: 1:10000

Not yet tested in other applications.

Images



Western blot analysis using PARP mouse mAb against Jurkat (1), K562 (2), HeLa (3), Raji (4), THP-1 (5) and SW620 (6) cell lysate.



Flow cytometric analysis of Jurkat cells using anti-PARP mAb (green) and negative control (purple).

Storage

Store at 4°C short term. Aliquot and store at -20°C long term.

501 Changsheng S Rd, Nanhu Dist, Jiaxing, Zhejiang, China

Tel: 86 21 31007137 | E-mail: save@bt-laboratory.com | www.bt-laboratory.com