

## ACP5 Monoclonal Antibody

### Description

<b>Product type</b>	Antibody
<b>Code</b>	BT-MCA3149
<b>Host</b>	Mouse
<b>Isotype</b>	Mouse IgG1
<b>Size</b>	100µL, 50µL
<b>Immunogen</b>	Purified recombinant fragment of human ACP5 (AA: 221-325) expressed in E. Coli.
<b>Mol wt</b>	36.6kDa
<b>Species reactivity</b>	Human
<b>Clonality</b>	Monoclonal
<b>Recommended application</b>	WB,IHC
<b>Concentration</b>	N/A
<b>Full name</b>	N/A
<b>Synonyms</b>	TRAP;SPENCDI

This product is for research use only, not for use in human, therapeutic or diagnostic procedure.

### Background

N/A

### Recommended Dilution

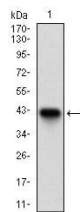
WB: 1:500 - 1:2000

IHC-p: 1:200 - 1:1000

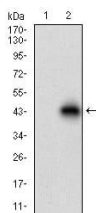
ELISA: 1:10000

Not yet tested in other applications.

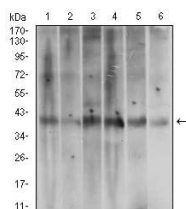
### Images



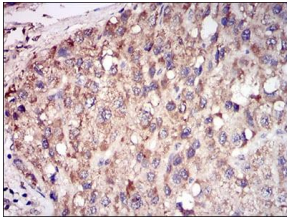
Western blot analysis using ACP5 mAb against human ACP5 recombinant protein. (Expected MW is 37.3 kDa)



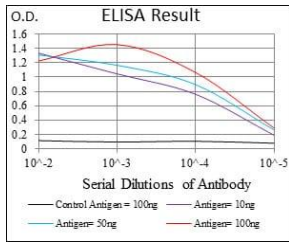
Western blot analysis using ACP5 mAb against HEK293 (1) and ACP5 (AA: 221-325)-hIgGFc transfected HEK293 (2) cell lysate.



Western blot analysis using ACP5 mouse mAb against A431 (1), T47D (2), HepG2 (3), MOLT4 (4), Jurkat (5) and HeLa (6) cell lysate.



Immunohistochemical analysis of paraffin-embedded liver cancer tissues using ACP5 mouse mAb with DAB staining.



Black line: Control Antigen (100 ng); Purple line: Antigen(10ng); Blue line: Antigen (50 ng); Red line: Antigen (100 ng);

### Storage

Store at 4°C short term. Aliquot and store at -20°C long term.

501 Changsheng S Rd, Nanhu Dist, Jiaxing, Zhejiang, China

Tel: 86 21 31007137 | E-mail: [save@bt-laboratory.com](mailto:save@bt-laboratory.com) | [www.bt-laboratory.com](http://www.bt-laboratory.com)