

CD300A Monoclonal Antibody

Description

Product type	Antibody
Code	BT-MCA3157
Host	Mouse
Isotype	Mouse IgG1
Size	100µL, 50µL
Immunogen	Purified recombinant fragment of human CD300A (AA: extra 18-180) expressed in E. Coli.
Mol wt	33.2kDa
Species reactivity	Others
Clonality	Monoclonal
Recommended application	Others
Concentration	N/A
Full name	N/A
Synonyms	IRC1;IRC2;CLM-8;IRp60;IGSF12;CMRF35H;CMRF-35H;CMRF35-H;CMRF35H9;CMRF35-H9;IRC1/IRC2;CMRF-35-H9

This product is for research use only, not for use in human, therapeutic or diagnostic procedure.

Background

This gene encodes a member of the CD300 glycoprotein family of cell surface proteins found on leukocytes involved in immune response signaling pathways. This gene is located on chromosome 17 in a cluster with all but one of the other family members. Multiple transcript variants encoding different isoforms have been found for this gene. [provided by RefSeq, Feb 2012]

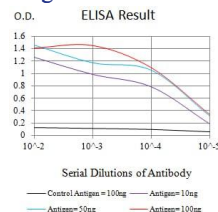
Recommended Dilution

WB: 1:500 - 1:2000

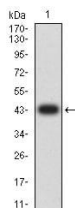
ELISA: 1:10000

Not yet tested in other applications.

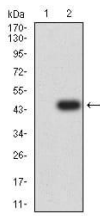
Images



Black line: Control Antigen (100 ng); Purple line: Antigen (10ng); Blue line: Antigen (50 ng); Red line: Antigen (100 ng)



Western blot analysis using CD300A mAb against human CD300A (AA: extra 18-180) recombinant protein. (Expected MW is 43.6 kDa)



Western blot analysis using CD300A mAb against HEK293 (1) and CD300A (AA: extra 18-180)-hIgGfc transfected HEK293 (2) cell lysate.

Storage

Store at 4°C short term. Aliquot and store at -20°C long term.

501 Changsheng S Rd, Nanhu Dist, Jiaxing, Zhejiang, China

Tel: 86 21 31007137 | E-mail: save@bt-laboratory.com | www.bt-laboratory.com