

TSLPR Monoclonal Antibody

Description

Product type	Antibody
Code	BT-MCA3174
Host	Mouse
Isotype	Mouse IgG1
Size	100µL, 50µL
Immunogen	Purified recombinant fragment of human TSLPR (AA: extra(23-231)) expressed in E. Coli.
Mol wt	42kDa
Species reactivity	Others
Clonality	Monoclonal
Recommended application	IHC,FCM
Concentration	N/A
Full name	N/A
Synonyms	CRL2;TSLPR;CRLF2Y

This product is for research use only, not for use in human, therapeutic or diagnostic procedure.

Background

This gene encodes a member of the type I cytokine receptor family. The encoded protein is a receptor for thymic stromal lymphopoietin (TSLP). Together with the interleukin 7 receptor (IL7R), the encoded protein and TSLP activate STAT3, STAT5, and JAK2 pathways, which control processes such as cell proliferation and development of the hematopoietic system. Rearrangement of this gene with immunoglobulin heavy chain gene (IGH) on chromosome 14, or with P2Y purinoceptor 8 gene (P2RY8) on the same X or Y chromosomes is associated with B-progenitor acute lymphoblastic leukemia (ALL) and Down syndrome ALL. Alternatively spliced transcript variants have been found for this gene.

Recommended Dilution

WB: 1:500 - 1:2000

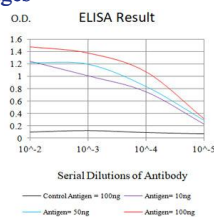
IHC-p: 1:200-1:1000

FCM: 1:200-1:400

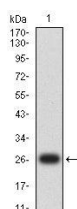
ELISA: 1:10000

Not yet tested in other applications.

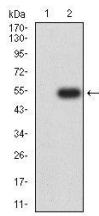
Images



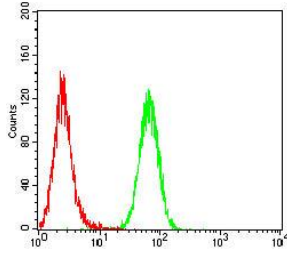
Black line: Control Antigen (100 ng);Purple line: Antigen (10ng); Blue line: Antigen (50 ng); Red line: Antigen (100 ng)



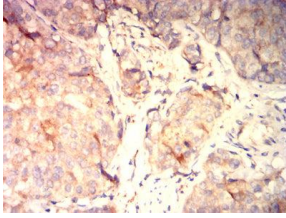
Western blot analysis using TSLPR mAb against human TSLPR (AA: extra(23-231)) recombinant protein. (Expected MW is 27 kDa)



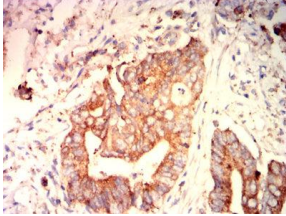
Western blot analysis using TSLPR mAb against HEK293-6e (1) and TSLPR (AA: extra(23-231))-hlgGfc transfected HEK293-6e (2) cell lysate.



Flow cytometric analysis of THP-1 cells using TSLPR mouse mAb (green) and negative control (red).



Immunohistochemical analysis of paraffin-embedded bladder cancer tissues using TSLPR mouse mAb with DAB staining.



Immunohistochemical analysis of paraffin-embedded rectal cancer tissues using TSLPR mouse mAb with DAB staining.

Storage

Store at 4°C short term. Aliquot and store at -20°C long term.

501 Changsheng S Rd, Nanhu Dist, Jiaxing, Zhejiang, China

Tel: 86 21 31007137 | E-mail: save@bt-laboratory.com | www.bt-laboratory.com