

GPR19 Monoclonal Antibody

Description

Product type	Antibody
Code	BT-MCA3176
Host	Mouse
Isotype	Mouse IgG2a
Size	100µL, 50µL
Immunogen	Purified recombinant fragment of human GPR19 expressed in E. Coli.
Mol wt	47.6kDa
Species reactivity	Others
Clonality	Monoclonal
Recommended application	FCM
Concentration	N/A
Full name	N/A
Synonyms	N/A

This product is for research use only, not for use in human, therapeutic or diagnostic procedure.

Background

G protein-coupled receptors (GPCRs) is known to be involved in the pathogenesis of a variety of diseases, including cancer initiation and progression. Within this family, approximately 140 GPCRs have no known endogenous ligands and these orphan" GPCRs remain poorly characterized. The orphan GPCR GPR19 was identified and cloned 2 decades ago. its expression to be elevated in breast cancers may play a potential role in breast cancer pathology.

Recommended Dilution

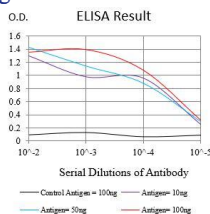
WB: 1:500 - 1:2000

FCM: 1:200 - 1:400

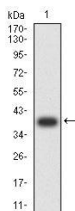
ELISA: 1:10000

Not yet tested in other applications.

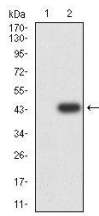
Images



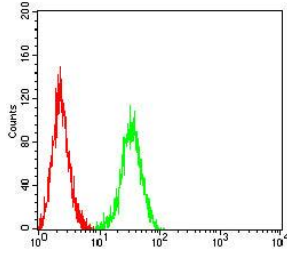
Black line: Control Antigen (100 ng);Purple line: Antigen (10ng); Blue line: Antigen (50 ng); Red line:Antigen (100 ng)



Western blot analysis using GPR19 mAb against human GPR19 recombinant protein. (Expected MW is 39.5 kDa)



Western blot analysis using GPR19 mAb against HEK293-6e (1) and GPR19-hIgGfc transfected HEK293-6e (2) cell lysate.



Flow cytometric analysis of C6 cells using GPR19 mouse mAb (green) and negative control (red).

Storage

Store at 4°C short term. Aliquot and store at -20°C long term.

501 Changsheng S Rd, Nanhu Dist, Jiaxing, Zhejiang, China

Tel: 86 21 31007137 | E-mail: save@bt-laboratory.com | www.bt-laboratory.com