

HFE Monoclonal Antibody

Description

Product type	Antibody
Code	BT-MCA3185
Host	Mouse
Isotype	Mouse IgG1
Size	100µL, 50µL
Immunogen	Purified recombinant fragment of human HFE expressed in E. Coli.
Mol wt	40kDa
Species reactivity	Human
Clonality	Monoclonal
Recommended application	ICC
Concentration	N/A
Full name	N/A
Synonyms	HH;HFE1;HLA-H;MVCD7;TFQTL2;MGC103790;dJ221C16.10.1

This product is for research use only, not for use in human, therapeutic or diagnostic procedure.

Background

The protein encoded by this gene is a membrane protein that is similar to MHC class I-type proteins and associates with beta2-microglobulin (beta2M). It is thought that this protein functions to regulate iron absorption by regulating the interaction of the transferrin receptor with transferrin. The iron storage disorder, hereditary haemochromatosis, is a recessive genetic disorder that results from defects in this gene. At least nine alternatively spliced variants have been described for this gene. Additional variants have been found but their full-length nature has not been determined.

Recommended Dilution

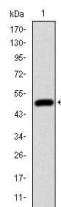
WB: 1:500 - 1:2000

ICC: 1:200 - 1:1000

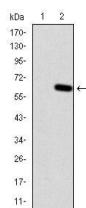
ELISA: 1:10000

Not yet tested in other applications.

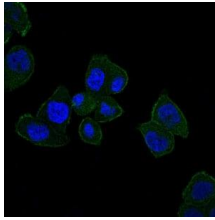
Images



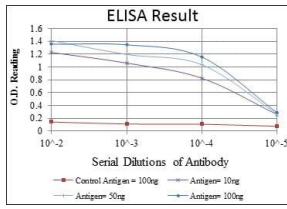
Western blot analysis using HFE mAb against human HFE (AA: 125-282) recombinant protein.
(Expected MW is 44 kDa)



Western blot analysis using HFE mAb against HEK293 (1) and HFE(AA: 125-282)-hlgGfc transfected HEK293 (2) cell lysate.



Immunofluorescence analysis of HepG2 cells using HFE mouse mAb (green). Blue: DRAQ5 fluorescent DNA dye.



Red: Control Antigen (100ng); Purple: Antigen (10ng); Green: Antigen (50ng); Blue: Antigen (100ng);

Storage

Store at 4°C short term. Aliquot and store at -20°C long term.

501 Changsheng S Rd, Nanhu Dist, Jiaxing, Zhejiang, China

Tel: 86 21 31007137 | E-mail: save@bt-laboratory.com | www.bt-laboratory.com