

GATA3 Monoclonal Antibody

Description

Product type	Antibody
Code	BT-MCA3209
Host	Mouse
Isotype	Mouse IgG1
Size	100µL, 50µL
Immunogen	Purified recombinant fragment of human GATA3 (AA: (294-443)) expressed in E. Coli.
Mol wt	48kDa
Species reactivity	Others
Clonality	Monoclonal
Recommended application	WB,IHC,FCM
Concentration	N/A
Full name	N/A
Synonyms	HDR;HDRS

This product is for research use only, not for use in human, therapeutic or diagnostic procedure.

Background

This gene encodes a protein which belongs to the GATA family of transcription factors. The protein contains two GATA-type zinc fingers and is an important regulator of T-cell development and plays an important role in endothelial cell biology. Defects in this gene are the cause of hypoparathyroidism with sensorineural deafness and renal dysplasia.

Recommended Dilution

WB: 1:500 - 1:2000

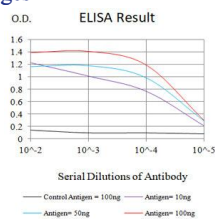
IHC-p: 1:200-1:1000

FCM: 1:200-1:400

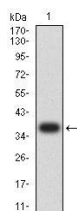
ELISA: 1:10000

Not yet tested in other applications.

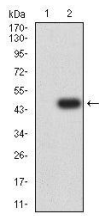
Images



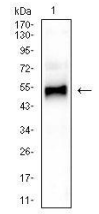
Black line: Control Antigen (100 ng);Purple line: Antigen (10ng); Blue line: Antigen (50 ng); Red line: Antigen (100 ng)



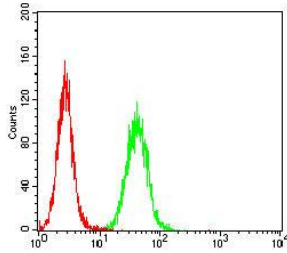
Western blot analysis using GATA3 mAb against human GATA3 (AA: (294-443)) recombinant protein. (Expected MW is 36.7 kDa)



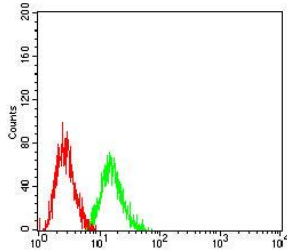
Western blot analysis using GATA3 mAb against HEK293-6e (1) and GATA3 (AA: (294-443))-hlgGFc transfected HEK293-6e (2) cell lysate.



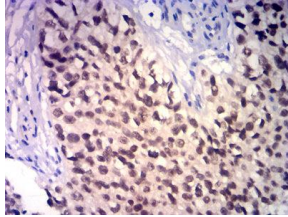
Western blot analysis using GATA3 mouse mAb against T47D (1) cell lysate.



Flow cytometric analysis of HeLa cells using GATA3 mouse mAb (green) and negative control (red).



Flow cytometric analysis of SW-620 cells using GATA3 mouse mAb (green) and negative control (red).



Immunohistochemical analysis of paraffin-embedded bladder cancer tissues using GATA3 mouse mAb with DAB staining.

Storage

Store at 4°C short term. Aliquot and store at -20°C long term.

501 Changsheng S Rd, Nanhui Dist, Jiading, Zhejiang, China

Tel: 86 21 31007137 | E-mail: save@bt-laboratory.com | www.bt-laboratory.com