

Calnexin Monoclonal Antibody

Description

Product type	Antibody
Code	BT-MCA3226
Host	Mouse
Isotype	Mouse IgG2b
Size	100µL, 50µL
Immunogen	Synthetic peptide corresponding to aa (CEAAEERPWLWVVYILTVLAL) of human Calnexin, conjugated to KLH.
Mol wt	90kDa
Species reactivity	Human
Clonality	Monoclonal
Recommended application	WB, ICC
Concentration	N/A
Full name	N/A
Synonyms	CNX;P90;CANX

This product is for research use only, not for use in human, therapeutic or diagnostic procedure.

Background

This gene encodes a member of the calnexin family of molecular chaperones. The encoded protein is a calcium-binding, endoplasmic reticulum (ER)-associated protein that interacts transiently with newly synthesized N-linked glycoproteins, facilitating protein folding and assembly. It may also play a central role in the quality control of protein folding by retaining incorrectly folded protein subunits within the ER for degradation. Alternatively spliced transcript variants encoding the same protein have been described.

Recommended Dilution

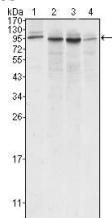
WB: 1:500 - 1:2000

ICC: 1:200 - 1:1000

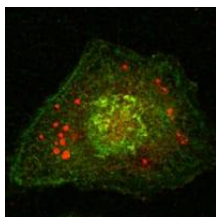
ELISA: 1:10000

Not yet tested in other applications.

Images



Western blot analysis using Calnexin mouse mAb against A431 (1), HeLa (2), MCF-7 (3) and A549 (4) cell lysate.



Confocal Immunofluorescence analysis of HeLa cells using Calnexin mouse mAb (green).

Storage

Store at 4°C short term. Aliquot and store at -20°C long term.

501 Changsheng S Rd, Nanhu Dist, Jiaxing, Zhejiang, China

Tel: 86 21 31007137 | E-mail: save@bt-laboratory.com | www.bt-laboratory.com