

## NAA10 Monoclonal Antibody

### Description

<b>Product type</b>	Antibody
<b>Code</b>	BT-MCA3227
<b>Host</b>	Mouse
<b>Isotype</b>	Mouse IgG1
<b>Size</b>	100μL, 50μL
<b>Immunogen</b>	Purified recombinant fragment of human NAA10 (AA: 111-235) expressed in E. Coli.
<b>Mol wt</b>	26.5kDa
<b>Species reactivity</b>	Human,Mouse,Monkey
<b>Clonality</b>	Monoclonal
<b>Recommended application</b>	WB,ICC
<b>Concentration</b>	N/A
<b>Full name</b>	N/A
<b>Synonyms</b>	TE2;ARD1;NATD;ARD1A;ARD1P;OGDNS;DXS707;MCOPS1

This product is for research use only, not for use in human, therapeutic or diagnostic procedure.

### Background

N/A

### Recommended Dilution

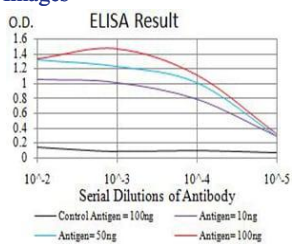
WB: 1:500 - 1:2000

ICC: 1:200 - 1:1000

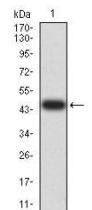
ELISA: 1:10000

Not yet tested in other applications.

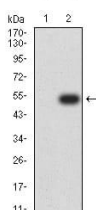
### Images



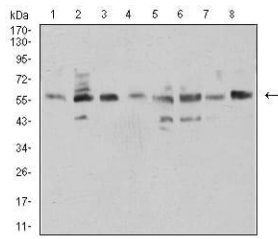
Black line: Control Antigen (100 ng);Purple line: Antigen (10ng); Blue line: Antigen (50 ng); Red line:Antigen (100 ng)



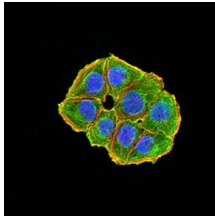
Western blot analysis using NAA10 mAb against human NAA10 (AA: 111-235) recombinant protein. (Expected MW is 47.2 kDa)



Western blot analysis using NAA10 mAb against HEK293 (1) and NAA10 (AA: 111-235)-hIgGFc transfected HEK293 (2) cell lysate.



Western blot analysis using NAA10 mouse mAb against HCT116 (1), COS7 (2), HEK293 (3), HL-60 (4), MCF-7 (5), HeLa (6), NIH/3T3 (7), and C2C12 (8) cell lysate.



Immunofluorescence analysis of HeLa cells using NAA10 mouse mAb (green). Blue: DRAQ5 fluorescent DNA dye. Red: Actin filaments have been labeled with Alexa Fluor- 555 phalloidin. Secondary antibody from Fisher (Cat#: 35503)

### Storage

Store at 4°C short term. Aliquot and store at -20°C long term.

501 Changsheng S Rd, Nanhu Dist, Jiaxing, Zhejiang, China

Tel: 86 21 31007137 | E-mail: [save@bt-laboratory.com](mailto:save@bt-laboratory.com) | [www.bt-laboratory.com](http://www.bt-laboratory.com)