

APEX1 Monoclonal Antibody

Description

Product type	Antibody
Code	BT-MCA3231
Host	Mouse
Isotype	Mouse IgG1
Size	100µL, 50µL
Immunogen	Purified recombinant fragment of human APEX1 (AA: 219-318) expressed in E. Coli.
Mol wt	35.6kDa
Species reactivity	Human,Monkey,Rat
Clonality	Monoclonal
Recommended application	WB,IHC,FCM
Concentration	N/A
Full name	N/A
Synonyms	APE;APX;APE1;APEN;APEX;HAP1;REF1

This product is for research use only, not for use in human, therapeutic or diagnostic procedure.

Background

N/A

Recommended Dilution

WB: 1:500 - 1:2000

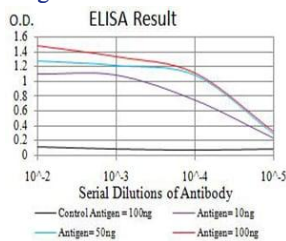
IHC-p: 1:200 - 1:1000

FCM: 1:200 - 1:400

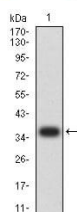
ELISA: 1:10000

Not yet tested in other applications.

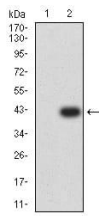
Images



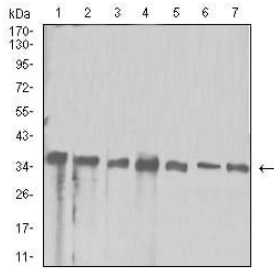
Black line: Control Antigen (100 ng);Purple line: Antigen (10ng); Blue line: Antigen (50 ng); Red line:Antigen (100 ng)



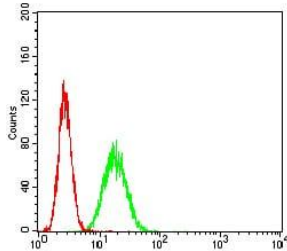
Western blot analysis using APEX1 mAb against human APEX1 (AA: 219-318) recombinant protein. (Expected MW is 37.4 kDa)



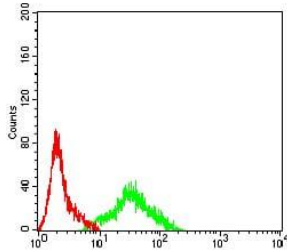
Western blot analysis using APEX1 mAb against HEK293 (1) and APEX1 (AA: 219-318)-hIgGFc transfected HEK293 (2) cell lysate.



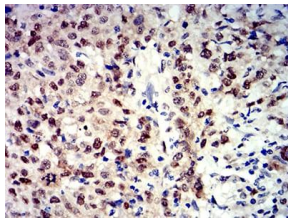
Western blot analysis using APEX1 mouse mAb against HeLa (1), Jurkat (2), SW480 (3), A431 (4), HepG2 (5), NIH/3T3 (6), and PC-12 (7) cell lysate.



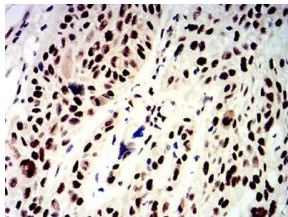
Flow cytometric analysis of HeLa cells using APEX1 mouse mAb (green) and negative control (red).



Flow cytometric analysis of SK-N-SH cells using APEX1 mouse mAb (green) and negative control (red).



Immunohistochemical analysis of paraffin-embedded breast cancer tissues using APEX1 mouse mAb with DAB staining.



Immunohistochemical analysis of paraffin-embedded esophageal cancer tissues using APEX1 mouse mAb with DAB staining.

Storage

Store at 4°C short term. Aliquot and store at -20°C long term.

501 Changsheng S Rd, Nanhu Dist, Jiaxing, Zhejiang, China

Tel: 86 21 31007137 | E-mail: save@bt-laboratory.com | www.bt-laboratory.com