

CD363 Monoclonal Antibody

Description

Product type	Antibody
Code	BT-MCA3232
Host	Mouse
Isotype	Mouse IgG2a
Size	100µL, 50µL
Immunogen	Purified recombinant fragment of human CD363 expressed in E. Coli.
Mol wt	42.8kDa
Species reactivity	Human
Clonality	Monoclonal
Recommended application	WB,IHC,FCM
Concentration	N/A
Full name	N/A
Synonyms	S1PR1;EDG1;S1P1;ECGF1;EDG-1;CHEDG1;DIS3362

This product is for research use only, not for use in human, therapeutic or diagnostic procedure.

Background

The protein encoded by this gene is structurally similar to G protein-coupled receptors and is highly expressed in endothelial cells. It binds the ligand sphingosine-1-phosphate with high affinity and high specificity, and suggested to be involved in the processes that regulate the differentiation of endothelial cells. Activation of this receptor induces cell-cell adhesion. Alternative splicing results in multiple transcript variants.

Recommended Dilution

WB: 1:500 - 1:2000

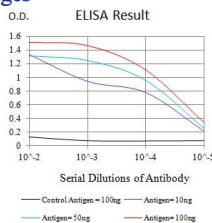
IHC-p: 1:200 - 1:1000

FCM: 1:200 - 1:400

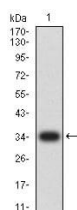
ELISA: 1:10000

Not yet tested in other applications.

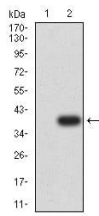
Images



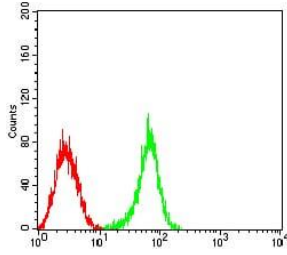
Black line: Control Antigen (100 ng);Purple line: Antigen (10ng); Blue line: Antigen (50 ng); Red line:Antigen (100 ng)



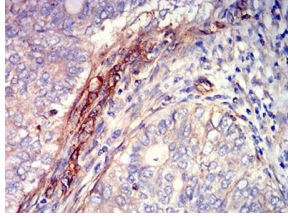
Western blot analysis using CD363 mAb against human CD363 recombinant protein. (Expected MW is 34.8 kDa)



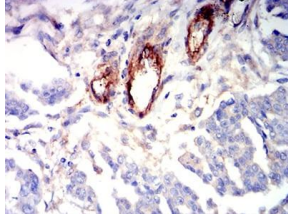
Western blot analysis using CD363 mAb against HEK2993 (1) and CD363-hlgGfc transfected HEK2993 (2) cell lysate.



Flow cytometric analysis of HL-60 cells using CD363 mouse mAb (green) and negative control (red).



Immunohistochemical analysis of paraffin-embedded cervical cancer tissues using CD363 mouse mAb with DAB staining.



Immunohistochemical analysis of paraffin-embedded ovarian cancer tissues using CD363 mouse mAb with DAB staining.

Storage

Store at 4°C short term. Aliquot and store at -20°C long term.

501 Changsheng S Rd, Nanhu Dist, Jiaxing, Zhejiang, China

Tel: 86 21 31007137 | E-mail: save@bt-laboratory.com | www.bt-laboratory.com