

## Myoglobin Monoclonal Antibody

### Description

<b>Product type</b>	Antibody
<b>Code</b>	BT-MCA3233
<b>Host</b>	Mouse
<b>Isotype</b>	Mouse IgG1
<b>Size</b>	100µL, 50µL
<b>Immunogen</b>	Purified recombinant fragment of Myoglobin expressed in E. Coli.
<b>Mol wt</b>	N/A
<b>Species reactivity</b>	Human
<b>Clonality</b>	Monoclonal
<b>Recommended application</b>	IHC
<b>Concentration</b>	N/A
<b>Full name</b>	N/A
<b>Synonyms</b>	PVALB;MGC13548;MB

**This product is for research use only, not for use in human, therapeutic or diagnostic procedure.**

### Background

Myoglobin (MB), with 154-amino acid protein (about 17kDa), is a member of the globin superfamily and expression of myoglobin is highest in skeletal and cardiac muscle. Functionally, myoglobin is well accepted as an O<sub>2</sub>-storage protein in muscle, capable of releasing O<sub>2</sub> during periods of hypoxia or anoxia. Myoglobin is also thought to buffer intracellular O<sub>2</sub> concentration when muscle activity increases and to facilitate intracellular O<sub>2</sub> diffusion by providing a parallel path that augments simple diffusion of dissolved O<sub>2</sub>. Furthermore, myoglobin is used together with cTnI or cTnT in clinical practise for better specificity in AMI diagnosis.

### Recommended Dilution

WB: 1:500 - 1:2000

IHC-p: 1:200 - 1:1000

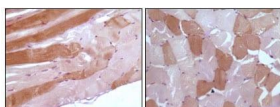
ELISA: 1:10000

Not yet tested in other applications.

### Images



Western blot analysis using Myoglobin mouse mAb against truncated Myoglobin recombinant protein(AA: 2-154).



Immunohistochemical analysis of paraffin-embedded human skeletal muscle tissue showing cytoplasmic localization using anti-Myoglobin antibody with DAB staining.

### Storage

Store at 4°C short term. Aliquot and store at -20°C long term.

501 Changsheng S Rd, Nanhu Dist, Jiaxing, Zhejiang, China  
Tel: 86 21 31007137 | E-mail: [save@bt-laboratory.com](mailto:save@bt-laboratory.com) | [www.bt-laboratory.com](http://www.bt-laboratory.com)