

CD42A Monoclonal Antibody

Description

Product type	Antibody
Code	BT-MCA3242
Host	Mouse
Isotype	Mouse IgG1
Size	100µL, 50µL
Immunogen	Purified recombinant fragment of human CD42A (AA: extra(17-147)) expressed in E. Coli.
Mol wt	19kDa
Species reactivity	Others
Clonality	Monoclonal
Recommended application	WB,IHC,FCM
Concentration	N/A
Full name	N/A
Synonyms	GPIX,GP9

This product is for research use only, not for use in human, therapeutic or diagnostic procedure.

Background

This gene encodes a small membrane glycoprotein found on the surface of human platelets. It forms a 1-to-1 noncovalent complex with glycoprotein Ib, a platelet surface membrane glycoprotein complex that functions as a receptor for von Willebrand factor. The complete receptor complex includes noncovalent association of the alpha and beta subunits with the protein encoded by this gene and platelet glycoprotein V. Defects in this gene are a cause of Bernard-Soulier syndrome, also known as giant platelet disease. These patients have unusually large platelets and have a clinical bleeding tendency. [provided by RefSeq, Oct 2008]

Recommended Dilution

WB: 1:500 - 1:2000

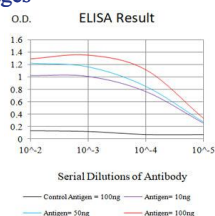
IHC-p: 1:200 - 1:1000

FCM: 1:200 - 1:400

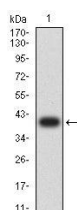
ELISA: 1:10000

Not yet tested in other applications.

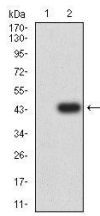
Images



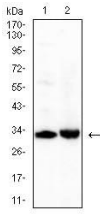
Black line: Control Antigen (100 ng);Purple line: Antigen (10ng); Blue line: Antigen (50 ng); Red line:Antigen (100 ng)



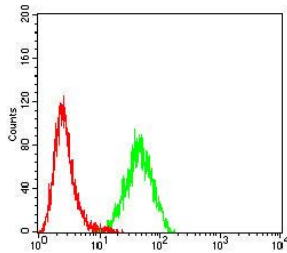
Western blot analysis using CD42A mAb against human CD42A (AA: extra(17-147)) recombinant protein. (Expected MW is 40.3kDa)



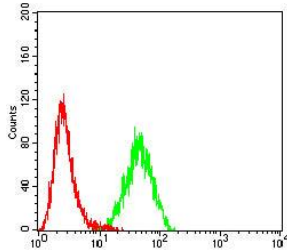
Western blot analysis using CD42A mAb against HEK293-6e (1) and human CD42A (AA: extra(17-147))-hIgGFc transfected HEK293-6e (2) cell lysate.



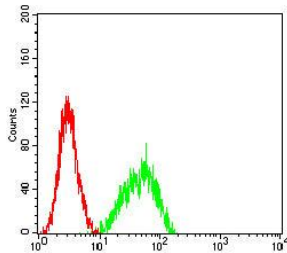
Western blot analysis using CD42A mouse mAb against PANC-1 (1), and L1210 (2) cell lysate.



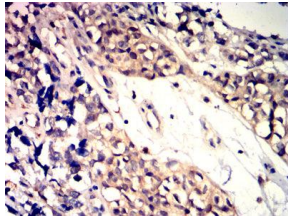
Flow cytometric analysis of K562 cells using CD42A mouse mAb (green) and negative control (red).



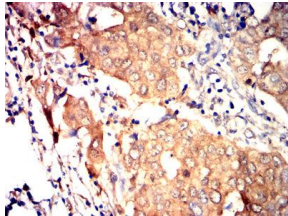
Flow cytometric analysis of THP-1 cells using CD42A mouse mAb (green) and negative control (red).



Flow cytometric analysis of Jurkat cells using CD42A mouse mAb (green) and negative control (red).



Immunohistochemical analysis of paraffin-embedded bladder cancer tissues using CD42A mouse mAb with DAB staining.



Immunohistochemical analysis of paraffin-embedded breast cancer tissues using CD42A mouse mAb with DAB staining.

Storage

Store at 4°C short term. Aliquot and store at -20°C long term.

501 Changsheng S Rd, Nanhu Dist, Jiaxing, Zhejiang, China

Tel: 86 21 31007137 | E-mail: save@bt-laboratory.com | www.bt-laboratory.com