

SCARB1 Monoclonal Antibody

Description

Product type	Antibody
Code	BT-MCA3245
Host	Mouse
Isotype	Mouse IgG2a
Size	100µL, 50µL
Immunogen	Purified recombinant fragment of human SCARB1 (AA: Extra(33-232)) expressed in E. Coli.
Mol wt	60kDa
Species reactivity	Others
Clonality	Monoclonal
Recommended application	WB,IHC,FCM
Concentration	N/A
Full name	N/A
Synonyms	CLA1;SRB1;CLA-1;SR-BI;CD36L1;HDLQTL6

This product is for research use only, not for use in human, therapeutic or diagnostic procedure.

Background

The protein encoded by this gene is a plasma membrane receptor for high density lipoprotein cholesterol (HDL). The encoded protein mediates cholesterol transfer to and from HDL. In addition, this protein is a receptor for hepatitis C virus glycoprotein E2. Several transcript variants encoding different isoforms have been found for this gene.[provided by RefSeq, Jan 2019]

Recommended Dilution

WB: 1:500 - 1:2000

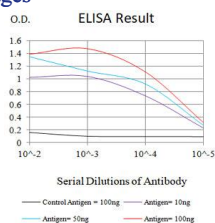
IHC-p: 1:200 - 1:1000

FCM: 1:200 - 1:400

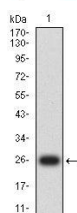
ELISA: 1:10000

Not yet tested in other applications.

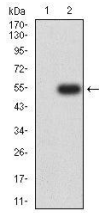
Images



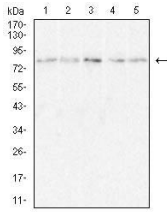
Black line: Control Antigen (100 ng);Purple line: Antigen (10ng); Blue line: Antigen (50 ng); Red line:Antigen (100 ng)



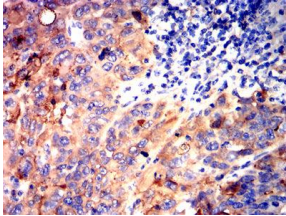
Western blot analysis using SCARB1 mAb against human SCARB1 (AA: Extra(33-232)) recombinant protein. (Expected MW is 26kDa)



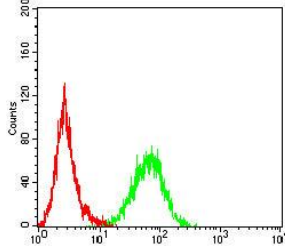
Western blot analysis using SCARB1 mAb against HEK293-6e (1) and human SCARB1 (AA: Extra(33-232))-hIgGFc transfected HEK293-6e (2) cell lysate.



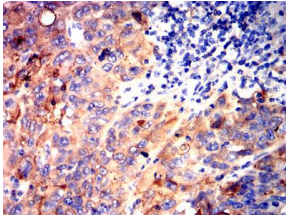
Western blot analysis using SCARB1 mouse mAb against HeLa (1), U937 (2), HePG2 (3), NIH/3T3 (4), and mouse Liver (5) cell lysate.



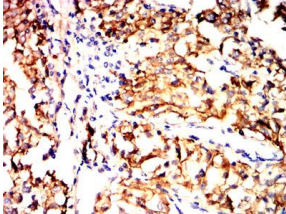
Flow cytometric analysis of HeLa cells using SCARB1 mouse mAb (green) and negative control (red).



Flow cytometric analysis of U937 cells using SCARB1 mouse mAb (green) and negative control (red).



Immunohistochemical analysis of paraffin-embedded endometrial cancer tissues using SCARB1 mouse mAb with DAB staining.



Immunohistochemical analysis of paraffin-embedded kidney cancer tissues using SCARB1 mouse mAb with DAB staining.

Storage

Store at 4°C short term. Aliquot and store at -20°C long term.

501 Changsheng S Rd, Nanhu Dist, Jiaxing, Zhejiang, China

Tel: 86 21 31007137 | E-mail: save@bt-laboratory.com | www.bt-laboratory.com