

CD5 Monoclonal Antibody

Description

Product type	Antibody
Code	BT-MCA3250
Host	Mouse
Isotype	Mouse IgG1
Size	100µL, 50µL
Immunogen	Purified recombinant fragment of human CD5 (AA: 403-495) expressed in E. Coli.
Mol wt	54.6kDa
Species reactivity	Others
Clonality	Monoclonal
Recommended application	WB,IHC,FCM
Concentration	N/A
Full name	N/A
Synonyms	T1;LEU1

This product is for research use only, not for use in human, therapeutic or diagnostic procedure.

Background

This gene encodes a member of the scavenger receptor cysteine-rich (SRCR) superfamily. Members of this family are secreted or membrane-anchored proteins mainly found in cells associated with the immune system. This protein is a type-I transmembrane glycoprotein found on the surface of thymocytes, T lymphocytes and a subset of B lymphocytes. The encoded protein contains three SRCR domains and may act as a receptor to regulate T-cell proliferation. Alternative splicing results in multiple transcript variants encoding different isoforms. [provided by RefSeq, Oct 2016]

Recommended Dilution

WB: 1:500 - 1:2000

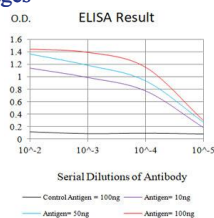
IHC-p: 1:200-1:1000

FCM: 1:200-1:400

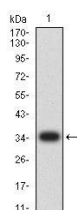
ELISA: 1:10000

Not yet tested in other applications.

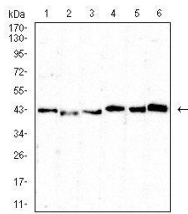
Images



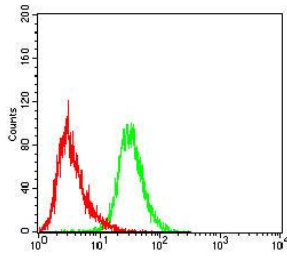
Black line: Control Antigen (100 ng);Purple line: Antigen (10ng); Blue line: Antigen (50 ng); Red line: Antigen (100 ng)



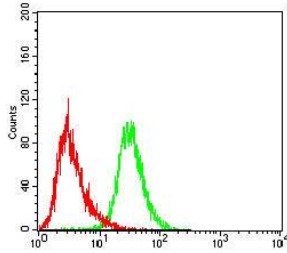
Western blot analysis using CD5 mAb against human CD5 (AA: 403-495) recombinant protein. (Expected MW is 35.4 kDa)



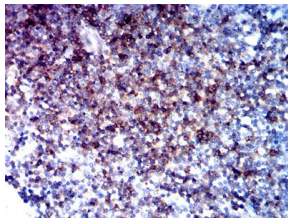
Western blot analysis using CD5 mouse mAb against MOLT4 (1), MOLT4 (2), U937 (3), L1210 (4), HEK239 (5), and HEK293-6e (6) cell lysate.



Flow cytometric analysis of THP-1 cells using CD5 mouse mAb (green) and negative control (red).



Flow cytometric analysis of Jurkat cells using CD5 mouse mAb (green) and negative control (red).



Immunohistochemical analysis of paraffin-embedded tonsil tissues using CD5 mouse mAb with DAB staining.

Storage

Store at 4°C short term. Aliquot and store at -20°C long term.

501 Changsheng S Rd, Nanhu Dist, Jiaxing, Zhejiang, China

Tel: 86 21 31007137 | E-mail: save@bt-laboratory.com | www.bt-laboratory.com