

RRM1 Monoclonal Antibody

Description

Product type	Antibody
Code	BT-MCA3252
Host	Mouse
Isotype	Mouse IgG2a
Size	100µL, 50µL
Immunogen	Purified recombinant fragment of human RRM1 (AA: 541-792) expressed in E. Coli.
Mol wt	90kDa
Species reactivity	Others
Clonality	Monoclonal
Recommended application	WB,IHC,FCM
Concentration	N/A
Full name	N/A
Synonyms	R1;RR1;RIR1

This product is for research use only, not for use in human, therapeutic or diagnostic procedure.

Background

This gene encodes the large and catalytic subunit of ribonucleotide reductase, an enzyme essential for the conversion of ribonucleotides into deoxyribonucleotides. A pool of available deoxyribonucleotides is important for DNA replication during S phase of the cell cycle as well as multiple DNA repair processes. Alternative splicing results in multiple transcript variants.

Recommended Dilution

WB: 1:500 - 1:2000

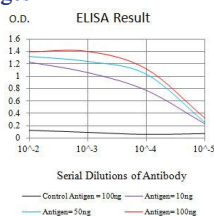
IHC-p: 1:200-1:1000

FCM: 1:200-1:400

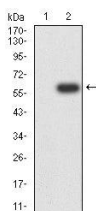
ELISA: 1:10000

Not yet tested in other applications.

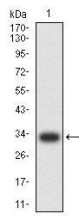
Images



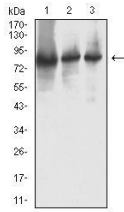
Black line: Control Antigen (100 ng);Purple line: Antigen (10ng); Blue line: Antigen (50 ng); Red line: Antigen (100 ng)



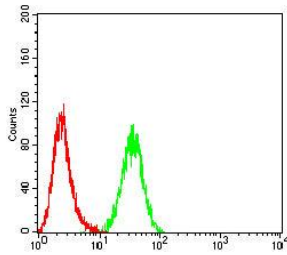
Western blot analysis using RRM1 mAb against HEK293 (1) and RRM1 (AA: 541-792)-hIgGfc transfected HEK293 (2) cell lysate.



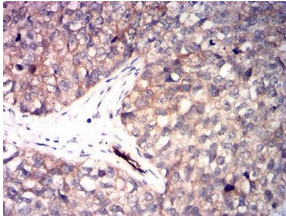
Western blot analysis using RRM1 mAb against human RRM1 (AA: 541-792) recombinant protein.
(Expected MW is 31.9 kDa)



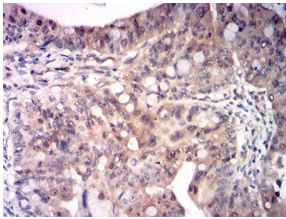
Western blot analysis using RRM1 mouse mAb against HeLa (1), Jurkat (2), and A431 (3) cell lysate.



Flow cytometric analysis of HeLa cells using RRM1 mouse mAb (green) and negative control (red).



Immunohistochemical analysis of paraffin-embedded bladder cancer tissues using RRM1 mouse mAb with DAB staining.



Immunohistochemical analysis of paraffin-embedded rectum cancer tissues using RRM1 mouse mAb with DAB staining.

Storage

Store at 4°C short term. Aliquot and store at -20°C long term.

501 Changsheng S Rd, Nanhu Dist, Jiaxing, Zhejiang, China

Tel: 86 21 31007137 | E-mail: save@bt-laboratory.com | www.bt-laboratory.com