

RAP1A Monoclonal Antibody

Description

Product type	Antibody
Code	BT-MCA3260
Host	Mouse
Isotype	Mouse IgG1
Size	100µL, 50µL
Immunogen	Purified recombinant fragment of human RAP1A expressed in E. Coli.
Mol wt	43.2kDa
Species reactivity	Human
Clonality	Monoclonal
Recommended application	FCM
Concentration	N/A
Full name	N/A
Synonyms	RAP1;KREV1;KREV-1;SMGP21

This product is for research use only, not for use in human, therapeutic or diagnostic procedure.

Background

The product of this gene belongs to the family of RAS-related proteins. These proteins share approximately 50% amino acid identity with the classical RAS proteins and have numerous structural features in common. The most striking difference between RAP proteins and RAS proteins resides in their 61st amino acid: glutamine in RAS is replaced by threonine in RAP proteins. The product of this gene counteracts the mitogenic function of RAS because it can interact with RAS GAPs and RAF in a competitive manner. Two transcript variants encoding the same protein have been identified for this gene.

Recommended Dilution

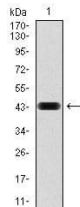
WB: 1:500 - 1:2000

FCM: 1:200 - 1:400

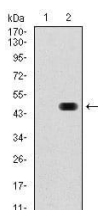
ELISA: 1:10000

Not yet tested in other applications.

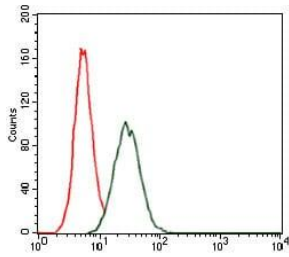
Images



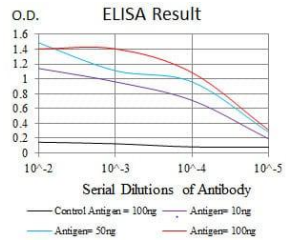
Western blot analysis using RAP1A mAb against human RAP1A (AA: 28-180) recombinant protein.
(Expected MW is 21 kDa)



Western blot analysis using RAP1A mAb against HEK293 (1) and RAP1A (AA: 28-180)-hIgGfc transfected HEK293 (2) cell lysate.



Flow cytometric analysis of HeLa cells using RAP1A mouse mAb (green) and negative control (red).



Black line: Control Antigen (100 ng); Purple line: Antigen(10ng); Blue line: Antigen (50 ng); Red line: Antigen (100 ng);

Storage

Store at 4°C short term. Aliquot and store at -20°C long term.

501 Changsheng S Rd, Nanhu Dist, Jiaxing, Zhejiang, China

Tel: 86 21 31007137 | E-mail: save@bt-laboratory.com | www.bt-laboratory.com