

MAGEA4 Monoclonal Antibody

Description

Product type	Antibody
Code	BT-MCA3266
Host	Mouse
Isotype	Mouse IgG1
Size	100μL, 50μL
Immunogen	Purified recombinant fragment of human MAGEA4 (AA: 1-225) expressed in E. Coli.
Mol wt	34.8kDa
Species reactivity	Others
Clonality	Monoclonal
Recommended application	WB,FCM
Concentration	N/A
Full name	N/A
Synonyms	CT1.4;MAGE4;MAGE4A;MAGE4B;MAGE-41;MAGE-X2

This product is for research use only, not for use in human, therapeutic or diagnostic procedure.

Background

This gene is a member of the MAGEA gene family. The members of this family encode proteins with 50 to 80% sequence identity to each other. The promoters and first exons of the MAGEA genes show considerable variability, suggesting that the existence of this gene family enables the same function to be expressed under different transcriptional controls. The MAGEA genes are clustered at chromosomal location Xq28. They have been implicated in some hereditary disorders, such as dyskeratosis congenita. Several variants encoding the same protein have been found for this gene.

Recommended Dilution

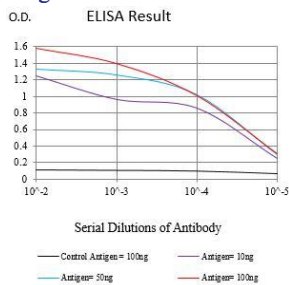
WB: 1:500 - 1:2000

FCM: 1:200 - 1:400

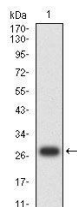
ELISA: 1:10000

Not yet tested in other applications.

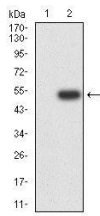
Images



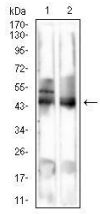
Black line: Control Antigen (100 ng);Purple line: Antigen (10ng); Blue line: Antigen (50 ng); Red line:Antigen (100 ng)



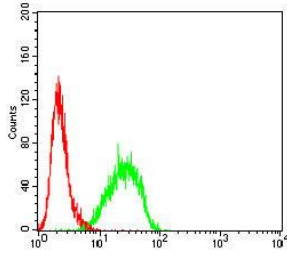
Western blot analysis using MAGEA4 mAb against human MAGEA4 (AA: 1-225) recombinant protein. (Expected MW is 27.2 kDa)



Western blot analysis using MAGEA4 mAb against HEK293-6e (1) and MAGEA4 (AA: 1-225)-hlgGFc transfected HEK293-6e (2) cell lysate.



Western blot analysis using MAGEA4 mouse mAb against Mouse liver (1), Rat liver (2) cell lysate.



Flow cytometric analysis of LNCAP cells using MAGEA4 mouse mAb (green) and negative control (red).

Storage

Store at 4°C short term. Aliquot and store at -20°C long term.

501 Changsheng S Rd, Nanhu Dist, Jiaxing, Zhejiang, China

Tel: 86 21 31007137 | E-mail: save@bt-laboratory.com | www.bt-laboratory.com