

ATF4 Monoclonal Antibody

Description

Product type	Antibody
Code	BT-MCA3278
Host	Mouse
Isotype	Mouse IgG1
Size	100µL, 50µL
Immunogen	Purified recombinant fragment of human ATF4 (AA: 212-351) expressed in E. Coli.
Mol wt	38.6kDa
Species reactivity	Human
Clonality	Monoclonal
Recommended application	WB,IHC
Concentration	N/A
Full name	N/A
Synonyms	CREB2;TXREB;CREB-2;TAXREB67

This product is for research use only, not for use in human, therapeutic or diagnostic procedure.

Background

N/A

Recommended Dilution

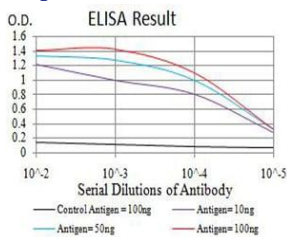
WB: 1:500 - 1:2000

IHC-p: 1:200 - 1:1000

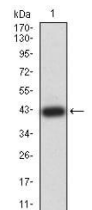
ELISA: 1:10000

Not yet tested in other applications.

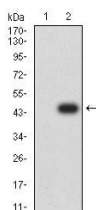
Images



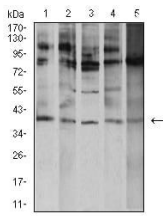
Black line: Control Antigen (100 ng);Purple line: Antigen (10ng); Blue line: Antigen (50 ng); Red line:Antigen (100 ng)



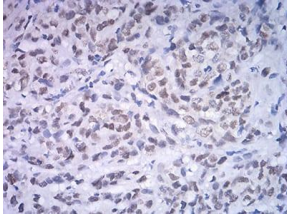
Western blot analysis using ATF4 mAb against human ATF4 (AA: 212-351) recombinant protein. (Expected MW is 41.5 kDa)



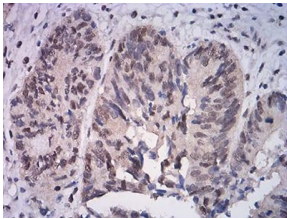
Western blot analysis using ATF4 mAb against HEK293 (1) and ATF4 (AA: 212-351)-hIgGFc transfected HEK293 (2) cell lysate.



Western blot analysis using ATF4 mouse mAb against K562 (1), A431 (2), HeLa (3), HEK293 (4), and Ramos (5) cell lysate.



Immunohistochemical analysis of paraffin-embedded breast cancer tissues using ATF4 mouse mAb with DAB staining.



Immunohistochemical analysis of paraffin-embedded rectum cancer tissues using ATF4 mouse mAb with DAB staining.

Storage

Store at 4°C short term. Aliquot and store at -20°C long term.

501 Changsheng S Rd, Nanhu Dist, Jiaxing, Zhejiang, China

Tel: 86 21 31007137 | E-mail: save@bt-laboratory.com | www.bt-laboratory.com