

CD132 Monoclonal Antibody

Description

Product type	Antibody
Code	BT-MCA3285
Host	Mouse
Isotype	Mouse IgG1
Size	100µL, 50µL
Immunogen	Purified recombinant fragment of human CD132 (AA: extra 23-262) expressed in E. Coli.
Mol wt	42.3kDa
Species reactivity	Human
Clonality	Monoclonal
Recommended application	WB,FCM
Concentration	N/A
Full name	N/A
Synonyms	IL2RG;P64;CIDX;IMD4;SCIDX;IL-2RG;SCIDX1

This product is for research use only, not for use in human, therapeutic or diagnostic procedure.

Background

The protein encoded by this gene is an important signaling component of many interleukin receptors, including those of interleukin -2, -4, -7 and -21, and is thus referred to as the common gamma chain. Mutations in this gene cause X-linked severe combined immunodeficiency (XSCID), as well as X-linked combined immunodeficiency (XCID), a less severe immunodeficiency disorder.

Recommended Dilution

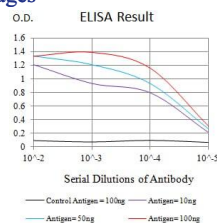
WB: 1:500 - 1:2000

FCM: 1:200 - 1:400

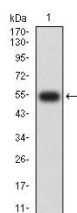
ELISA: 1:10000

Not yet tested in other applications.

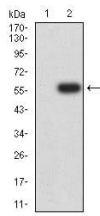
Images



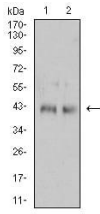
Black line: Control Antigen (100 ng);Purple line: Antigen (10ng); Blue line: Antigen (50 ng); Red line:Antigen (100 ng)



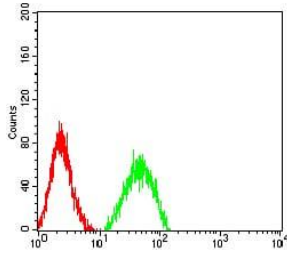
Western blot analysis using CD132 mAb against human CD132 (AA: extra 23-262) recombinant protein. (Expected MW is 54.2 kDa)



Western blot analysis using CD132 mAb against HEK293 (1) and CD132 (AA: extra 23-262)-hlgGFc transfected HEK293 (2) cell lysate.



Western blot analysis using CD132 mouse mAb against Jurkat (1) and MOLT4 (2) cell lysate.



Flow cytometric analysis of HL-60 cells using CD132 mouse mAb (green) and negative control (red).

Storage

Store at 4°C short term. Aliquot and store at -20°C long term.

501 Changsheng S Rd, Nanhu Dist, Jiaxing, Zhejiang, China

Tel: 86 21 31007137 | E-mail: save@bt-laboratory.com | www.bt-laboratory.com