

## CWP1 Monoclonal Antibody

### Description

<b>Product type</b>	Antibody
<b>Code</b>	BT-MCA3291
<b>Host</b>	Mouse
<b>Isotype</b>	Mouse IgG1
<b>Size</b>	100μL, 50μL
<b>Immunogen</b>	Purified recombinant fragment of human CWP1 (AA: 1-241) expressed in E. Coli.
<b>Mol wt</b>	N/A
<b>Species reactivity</b>	N/A
<b>Clonality</b>	Monoclonal
<b>Recommended application</b>	Others
<b>Concentration</b>	N/A
<b>Full name</b>	N/A
<b>Synonyms</b>	N/A

This product is for research use only, not for use in human, therapeutic or diagnostic procedure.

### Background

Giardia lamblia ATCC 50803

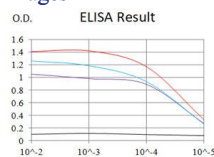
### Recommended Dilution

WB: 1:500 - 1:2000

ELISA: 1:10000

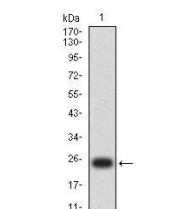
Not yet tested in other applications.

### Images



Black line: Control Antigen (100 ng); Purple line: Antigen (10ng); Blue line: Antigen (50 ng); Red line: Antigen (100 ng)

Serial Dilutions of Antibody



Western blot analysis using CWP1 mAb against human CWP1 (AA: 1-241) recombinant protein. (Expected MW is 51.5 kDa)

### Storage

Store at 4°C short term. Aliquot and store at -20°C long term.