

MET Monoclonal Antibody

Description

Product type	Antibody
Code	BT-MCA3327
Host	Mouse
Isotype	Mouse IgG1
Size	100µL, 50µL
Immunogen	Purified recombinant fragment of human MET (AA: 743-932) expressed in E. Coli.
Mol wt	155kDa
Species reactivity	Human,Monkey
Clonality	Monoclonal
Recommended application	WB,IHC,ICC,FCM
Concentration	N/A
Full name	N/A
Synonyms	HGFR;AUTS9;RCCP2;c-Met;DFNB97

This product is for research use only, not for use in human, therapeutic or diagnostic procedure.

Background

N/A

Recommended Dilution

WB: 1:500 - 1:2000

IHC-p: 1:200 - 1:1000

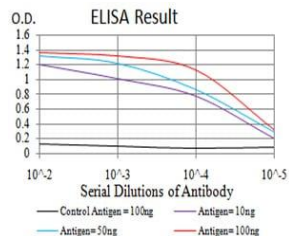
ICC: 1:200 - 1:1000

FCM: 1:200 - 1:400

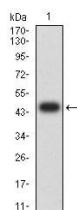
ELISA: 1:10000

Not yet tested in other applications.

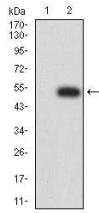
Images



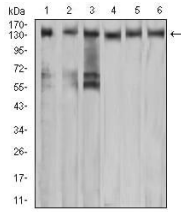
Black line: Control Antigen (100 ng);Purple line: Antigen (10ng); Blue line: Antigen (50 ng); Red line:Antigen (100 ng)



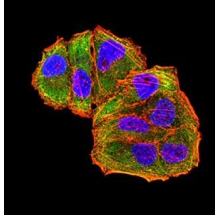
Western blot analysis using MET mAb against human MET (AA: 743-932) recombinant protein. (Expected MW is 51 kDa)



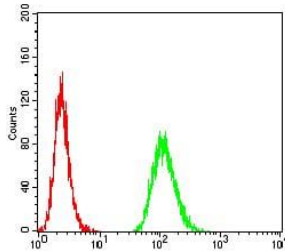
Western blot analysis using MET mAb against HEK293 (1) and MET (AA: 743-932)-hIgGFc transfected HEK293 (2) cell lysate.



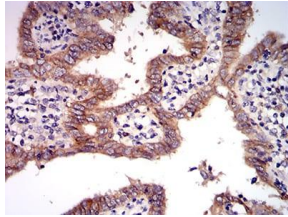
Western blot analysis using MET mouse mAb against A549 (1), COS7 (2), HeLa (3), HEK293 (4), HepG2 (5), and A431 (6) cell lysate.



Immunofluorescence analysis of HeLa cells using MET mouse mAb (green). Blue: DRAQ5 fluorescent DNA dye. Red: Actin filaments have been labeled with Alexa Fluor-555 phalloidin. Secondary antibody from Fisher (Cat#: 35503)



Flow cytometric analysis of MCF-7 cells using MET mouse mAb (green) and negative control (red).



Immunohistochemical analysis of paraffin-embedded endometrial cancer tissues using MET mouse mAb with DAB staining.

Storage

Store at 4°C short term. Aliquot and store at -20°C long term.

501 Changsheng S Rd, Nanhu Dist, Jiaxing, Zhejiang, China

Tel: 86 21 31007137 | E-mail: save@bt-laboratory.com | www.bt-laboratory.com