

PLIN2 Monoclonal Antibody

Description

Product type	Antibody
Code	BT-MCA3342
Host	Mouse
Isotype	Mouse IgG1
Size	100µL, 50µL
Immunogen	Purified recombinant fragment of human PLIN2 (AA: 286-437) expressed in E. Coli.
Mol wt	48kDa
Species reactivity	Human
Clonality	Monoclonal
Recommended application	WB,IHC,ICC,FCM
Concentration	N/A
Full name	N/A
Synonyms	ADFP;ADRP

This product is for research use only, not for use in human, therapeutic or diagnostic procedure.

Background

N/A

Recommended Dilution

WB: 1:500 - 1:2000

IHC-p: 1:200 - 1:1000

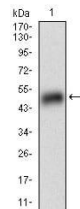
ICC: 1:200 - 1:1000

FCM: 1:200 - 1:400

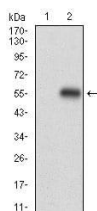
ELISA: 1:10000

Not yet tested in other applications.

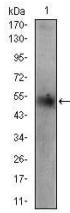
Images



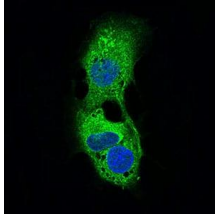
Western blot analysis using PLIN2 mAb against human PLIN2 (AA: 286-437) recombinant protein.
(Expected MW is 42.6 kDa)



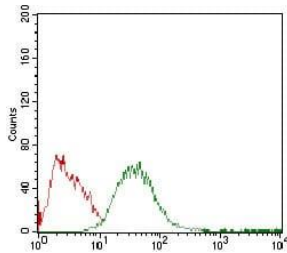
Western blot analysis using PLIN2 mAb against HEK293 (1) and PLIN2 (AA: 286-437)-hIgGFc transfected HEK293 (2) cell lysate.



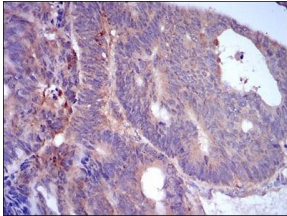
Western blot analysis using PLIN2 mouse mAb against HepG2 cell lysate.



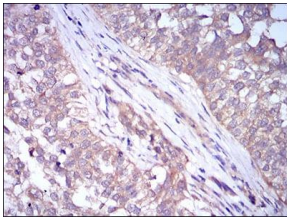
Immunofluorescence analysis of HepG2 cells using PLIN2 mouse mAb (green). Blue: DRAQ5 fluorescent DNA dye. Secondary antibody from Fisher (Cat#: 35503)



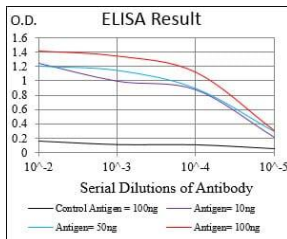
Flow cytometric analysis of HepG2 cells using PLIN2 mouse mAb (green) and negative control (red).



Immunohistochemical analysis of paraffin-embedded rectum cancer tissues using PLIN2 mouse mAb with DAB staining.



Immunohistochemical analysis of paraffin-embedded bladder cancer tissues using PLIN2 mouse mAb with DAB staining.



Black line: Control Antigen (100 ng); Purple line: Antigen(10ng); Blue line: Antigen (50 ng); Red line: Antigen (100 ng);

Storage

Store at 4°C short term. Aliquot and store at -20°C long term.

501 Changsheng S Rd, Nanhui Dist, Jiaxing, Zhejiang, China

Tel: 86 21 31007137 | E-mail: save@bt-laboratory.com | www.bt-laboratory.com