

PDHA1 Monoclonal Antibody

Description

Product type	Antibody
Code	BT-MCA3345
Host	Mouse
Isotype	Mouse IgG2b
Size	100µL, 50µL
Immunogen	Purified recombinant fragment of human PDHA1 (AA: 241-390) expressed in E. Coli.
Mol wt	43.3kDa
Species reactivity	Human
Clonality	Monoclonal
Recommended application	WB,FCM
Concentration	N/A
Full name	N/A
Synonyms	PDHA;PDHAD;PHE1A;PDHCE1A

This product is for research use only, not for use in human, therapeutic or diagnostic procedure.

Background

The pyruvate dehydrogenase (PDH) complex is a nuclear-encoded mitochondrial multienzyme complex that catalyzes the overall conversion of pyruvate to acetyl-CoA and CO₂, and provides the primary link between glycolysis and the tricarboxylic acid (TCA) cycle. The PDH complex is composed of multiple copies of three enzymatic components: pyruvate dehydrogenase (E1), dihydrolipoamide acetyltransferase (E2) and lipoamide dehydrogenase (E3). The E1 enzyme is a heterotetramer of two alpha and two beta subunits. This gene encodes the E1 alpha 1 subunit containing the E1 active site, and plays a key role in the function of the PDH complex. Mutations in this gene are associated with pyruvate dehydrogenase E1-alpha deficiency and X-linked Leigh syndrome. Alternatively spliced transcript variants encoding different isoforms have been found for this gene.

Recommended Dilution

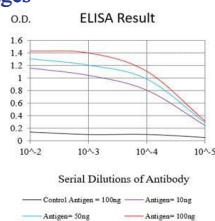
WB: 1:500 - 1:2000

FCM: 1:200 - 1:400

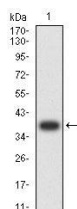
ELISA: 1:10000

Not yet tested in other applications.

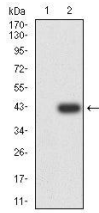
Images



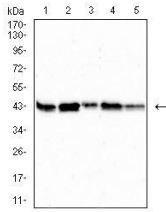
Black line: Control Antigen (100 ng);Purple line: Antigen (10ng); Blue line: Antigen (50 ng); Red line:Antigen (100 ng)



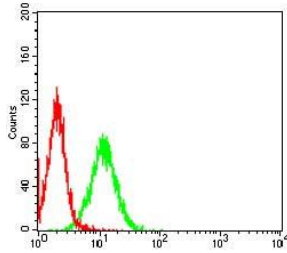
Western blot analysis using PDHA1 mAb against human PDHA1 (AA: 241-390) recombinant protein. (Expected MW is 37.5 kDa)



Western blot analysis using PDHA1 mAb against HEK293-6e (1) and PDHA1 (AA: 241-390)-hlgGFc transfected HEK293-6e (2) cell lysate.



Western blot analysis using PDHA1 mouse mAb against HepG2 (1), HL-60 (2),SK-OV-3 (3),PC-3 (4) and PANC-1 (5) cell lysate.



Flow cytometric analysis of HeLa cells using PDHA1 mouse mAb (green) and negative control (red).

Storage

Store at 4°C short term. Aliquot and store at -20°C long term.

501 Changsheng S Rd, Nanhu Dist, Jiaxing, Zhejiang, China

Tel: 86 21 31007137 | E-mail: save@bt-laboratory.com | www.bt-laboratory.com