

CPT2 Monoclonal Antibody

Description

Product type	Antibody
Code	BT-MCA3359
Host	Mouse
Isotype	Mouse IgG2a
Size	100µL, 50µL
Immunogen	Purified recombinant fragment of human CPT2 (AA: 26-178) expressed in E. Coli.
Mol wt	74KDa
Species reactivity	Human,Mouse,Rat
Clonality	Monoclonal
Recommended application	WB,FCM
Concentration	N/A
Full name	N/A
Synonyms	CPT1;IIAE4;CPTASE

This product is for research use only, not for use in human, therapeutic or diagnostic procedure.

Background

The protein encoded by this gene is a nuclear protein which is transported to the mitochondrial inner membrane. Together with carnitine palmitoyltransferase I, the encoded protein oxidizes long-chain fatty acids in the mitochondria. Defects in this gene are associated with mitochondrial long-chain fatty-acid (LCFA) oxidation disorders.

Recommended Dilution

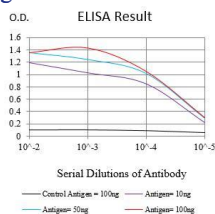
WB: 1:500 - 1:2000

FCM: 1:200 - 1:400

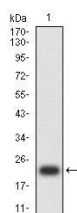
ELISA: 1:10000

Not yet tested in other applications.

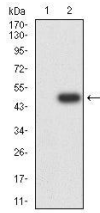
Images



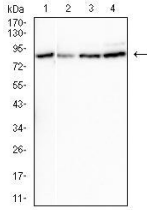
Black line: Control Antigen (100 ng);Purple line: Antigen (10ng); Blue line: Antigen (50 ng); Red line:Antigen (100 ng)



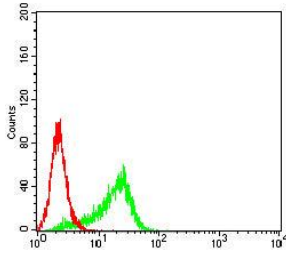
Western blot analysis using CPT2 mAb against human CPT2 (AA: 26-178) recombinant protein. (Expected MW is 21.4 kDa)



Western blot analysis using CPT2 mAb against HEK293-6e (1) and CPT2 (AA:26-178)-hlgGFc transfected HEK293-6e (2) cell lysate.



Western blot analysis using CPT2 mouse mAb against MCF-7 (1), HeLa (2), NIH/3T3 (3) and PC-12 (4) cell lysate.



Flow cytometric analysis of HeLa cells using CPT2 mouse mAb (green) and negative control (red).

Storage

Store at 4°C short term. Aliquot and store at -20°C long term.

501 Changsheng S Rd, Nanhu Dist, Jiaxing, Zhejiang, China

Tel: 86 21 31007137 | E-mail: save@bt-laboratory.com | www.bt-laboratory.com