

## XRCC1 Monoclonal Antibody

### Description

<b>Product type</b>	Antibody
<b>Code</b>	BT-MCA3367
<b>Host</b>	Mouse
<b>Isotype</b>	Mouse IgG1
<b>Size</b>	100µL, 50µL
<b>Immunogen</b>	Purified recombinant fragment of human XRCC1 (AA:1-150) expressed in E. Coli.
<b>Mol wt</b>	69.5kDa
<b>Species reactivity</b>	Others
<b>Clonality</b>	Monoclonal
<b>Recommended application</b>	WB,IHC,FCM
<b>Concentration</b>	N/A
<b>Full name</b>	N/A
<b>Synonyms</b>	RCC;SCAR26

This product is for research use only, not for use in human, therapeutic or diagnostic procedure.

### Background

The protein encoded by this gene is involved in the efficient repair of DNA single-strand breaks formed by exposure to ionizing radiation and alkylating agents. This protein interacts with DNA ligase III, polymerase beta and poly (ADP-ribose) polymerase to participate in the base excision repair pathway. It may play a role in DNA processing during meiosis and recombination in germ cells. A rare microsatellite polymorphism in this gene is associated with cancer in patients of varying radiosensitivity.

### Recommended Dilution

WB: 1:500 - 1:2000

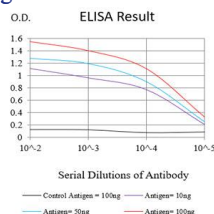
IHC-p: 1:200 - 1:1000

FCM: 1:200 - 1:400

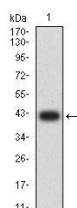
ELISA: 1:10000

Not yet tested in other applications.

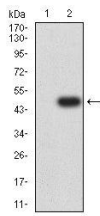
### Images



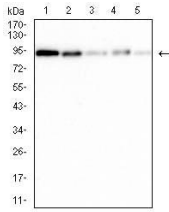
Black line: Control Antigen (100 ng);Purple line: Antigen (10ng); Blue line: Antigen (50 ng); Red line:Antigen (100 ng)



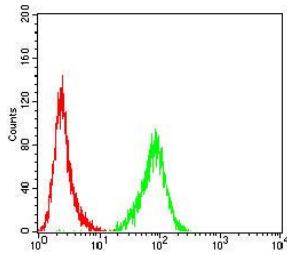
Western blot analysis using XRCC1 mAb against human XRCC1 (AA:1-150) recombinant protein. (Expected MW is 42.5 kDa)



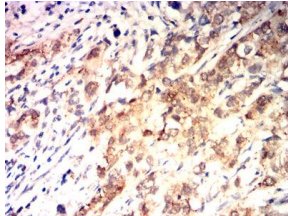
Western blot analysis using XRCC1 mAb against HEK293-6e (1) and human XRCC1 (AA:1-150)-hlgGFc transfected HEK293-6e (2) cell lysate.



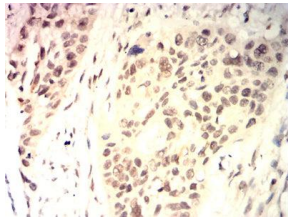
Western blot analysis using XRCC1 mouse mAb against Hela (1), Jurkat (2), k562 (3), SK-OV-3 (4), and COS-7 (5) cell lysate.



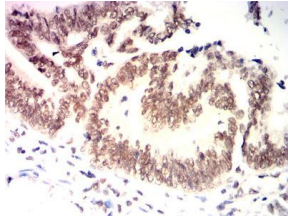
Flow cytometric analysis of Jurkat cells using XRCC1 mouse mAb (green) and negative control (red).



Immunohistochemical analysis of paraffin-embedded bladder Cancer tissues using Jurkat mouse mAb with DAB staining.



Immunohistochemical analysis of paraffin-embedded esophageal cancer tissues using Jurkat mouse mAb with DAB staining.



Immunohistochemical analysis of paraffin-embedded rectal cancer tissues using Jurkat mouse mAb with DAB staining.

### Storage

Store at 4°C short term. Aliquot and store at -20°C long term.

501 Changsheng S Rd, Nanhu Dist, Jiaxing, Zhejiang, China

Tel: 86 21 31007137 | E-mail: [save@bt-laboratory.com](mailto:save@bt-laboratory.com) | [www.bt-laboratory.com](http://www.bt-laboratory.com)