

HLA-DPB1 Monoclonal Antibody

Description

Product type	Antibody
Code	BT-MCA3372
Host	Mouse
Isotype	Mouse IgG1
Size	100µL, 50µL
Immunogen	Purified recombinant fragment of human HLA-DPB1 (AA: extra 30-215) expressed in E. Coli.
Mol wt	29.2kDa
Species reactivity	Human,Rat
Clonality	Monoclonal
Recommended application	IHC;FCM
Concentration	N/A
Full name	N/A
Synonyms	DPB1;HLA-DP;HLA-DPB;HLA-DP1B

This product is for research use only, not for use in human, therapeutic or diagnostic procedure.

Background

HLA-DPB belongs to the HLA class II beta chain paralogues. This class II molecule is a heterodimer consisting of an alpha (DPA) and a beta chain (DPB), both anchored in the membrane. It plays a central role in the immune system by presenting peptides derived from extracellular proteins. Class II molecules are expressed in antigen presenting cells (APC: B lymphocytes, dendritic cells, macrophages). The beta chain is approximately 26-28 kDa and its gene contains 6 exons. Exon one encodes the leader peptide, exons 2 and 3 encode the two extracellular domains, exon 4 encodes the transmembrane domain and exon 5 encodes the cytoplasmic tail. Within the DP molecule both the alpha chain and the beta chain contain the polymorphisms specifying the peptide binding specificities, resulting in up to 4 different molecules.

Recommended Dilution

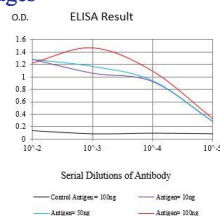
IHC-p: 1:200 - 1:1000

FCM: 1:200 - 1:400

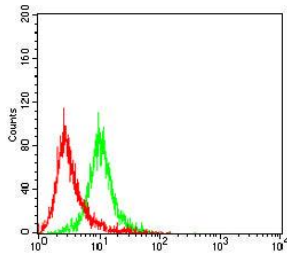
ELISA: 1:10000

Not yet tested in other applications.

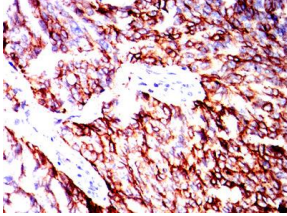
Images



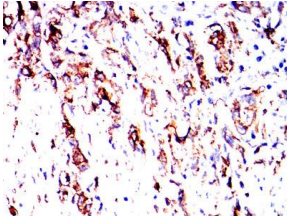
Black line: Control Antigen (100 ng);Purple line: Antigen (10ng); Blue line: Antigen (50 ng); Red line:Antigen (100 ng)



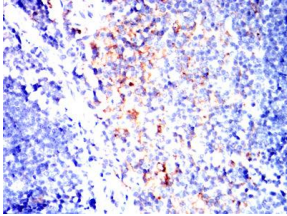
Flow cytometric analysis of RAJI cells using HLA-DPB1 mouse mAb (green) and negative control (red).



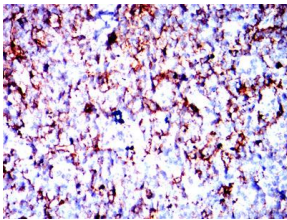
Immunohistochemical analysis of paraffin-embedded Ovarian cancer tissues using HLA-DPB1 mouse mAb with DAB staining.



Immunohistochemical analysis of paraffin-embedded gastric cancer tissues using HLA-DPB1 mouse mAb with DAB staining.



Immunohistochemical analysis of paraffin-embedded Rat thymus tissues using HLA-DPB1 mouse mAb with DAB staining.



Immunohistochemical analysis of paraffin-embedded Rabbit thymus tissues using HLA-DPB1 mouse mAb with DAB staining.

Storage

Store at 4°C short term. Aliquot and store at -20°C long term.

501 Changsheng S Rd, Nanhu Dist, Jiaxing, Zhejiang, China

Tel: 86 21 31007137 | E-mail: save@bt-laboratory.com | www.bt-laboratory.com