

APBA2 Monoclonal Antibody

Description

Product type	Antibody
Code	BT-MCA3386
Host	Mouse
Isotype	Mouse IgG1
Size	100µL, 50µL
Immunogen	Purified recombinant fragment of human APBA2 (AA: 15-158) expressed in E. Coli.
Mol wt	82.5kDa
Species reactivity	Human
Clonality	Monoclonal
Recommended application	ICC
Concentration	N/A
Full name	N/A
Synonyms	X11L;MINT2;LIN-10;HsT16821;X11-BETA;D15S1518E;MGC:14091

This product is for research use only, not for use in human, therapeutic or diagnostic procedure.

Background

N/A

Recommended Dilution

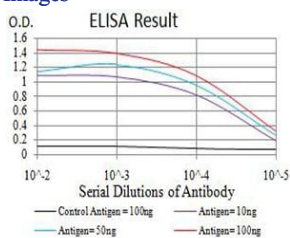
WB: 1:500 - 1:2000

ICC: 1:50 - 1:200

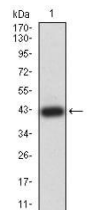
ELISA: 1:10000

Not yet tested in other applications.

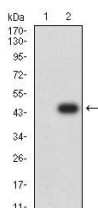
Images



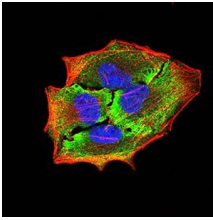
Black line: Control Antigen (100 ng);Purple line: Antigen (10ng); Blue line: Antigen (50 ng); Red line:Antigen (100 ng)



Western blot analysis using APBA2 mAb against human APBA2 (AA: 15-158) recombinant protein. (Expected MW is 42 kDa)



Western blot analysis using APBA2 mAb against HEK293 (1) and APBA2 (AA: 15-158)-hIGFc transfected HEK293 (2) cell lysate.



Immunofluorescence analysis of HeLa cells using APBA2 mouse mAb (green). Blue: DRAQ5 fluorescent DNA dye. Red: Actin filaments have been labeled with Alexa Fluor- 555 phalloidin. Secondary antibody from Fisher (Cat#: 35503)

Storage

Store at 4°C short term. Aliquot and store at -20°C long term.

501 Changsheng S Rd, Nanhu Dist, Jiaxing, Zhejiang, China

Tel: 86 21 31007137 | E-mail: save@bt-laboratory.com | www.bt-laboratory.com