

LILRA1 Monoclonal Antibody

Description

Product type	Antibody
Code	BT-MCA3388
Host	Mouse
Isotype	Mouse IgG2a
Size	100µL, 50µL
Immunogen	Purified recombinant fragment of human LILRA1 (AA: extra 322-461) expressed in E. Coli.
Mol wt	53.3kDa
Species reactivity	Human
Clonality	Monoclonal
Recommended application	FCM
Concentration	N/A
Full name	N/A
Synonyms	LIR6;CD85I;LIR-6

This product is for research use only, not for use in human, therapeutic or diagnostic procedure.

Background

This gene encodes an activating member of the leukocyte immunoglobulin-like receptor (LIR) family, which is found in a gene cluster at chromosomal region 19q13.4. The encoded protein is predominantly expressed in B cells, interacts with major histocompatibility complex class I ligands, and contributes to the regulation of immune responses. Alternative splicing results in multiple transcript variants encoding different isoforms.

Recommended Dilution

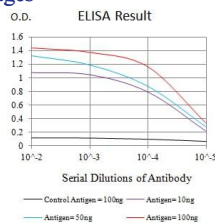
WB: 1:500 - 1:2000

FCM: 1:200 - 1:400

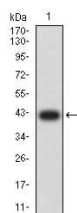
ELISA: 1:10000

Not yet tested in other applications.

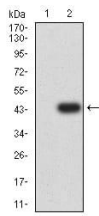
Images



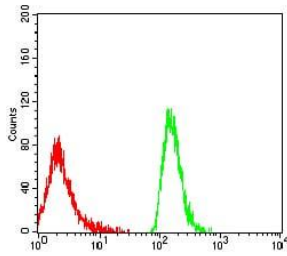
Black line: Control Antigen (100 ng);Purple line: Antigen (10ng); Blue line: Antigen (50 ng); Red line:Antigen (100 ng)



Western blot analysis using LILRA1 mAb against human LILRA1 (AA: extra 322-461) recombinant protein. (Expected MW is 41 kDa)



Western blot analysis using LILRA1 mAb against HEK293 (1) and LILRA1 (AA: extra 322-461)-hlgGFc transfected HEK293 (2) cell lysate.



Flow cytometric analysis of MOLT4 cells using LILRA1 mouse mAb (green) and negative control (red).

Storage

Store at 4°C short term. Aliquot and store at -20°C long term.

501 Changsheng S Rd, Nanhu Dist, Jiaxing, Zhejiang, China

Tel: 86 21 31007137 | E-mail: save@bt-laboratory.com | www.bt-laboratory.com