

KRT6A Monoclonal Antibody

Description

Product type	Antibody
Code	BT-MCA3396
Host	Mouse
Isotype	Mouse IgG2b
Size	100µL, 50µL
Immunogen	Purified recombinant fragment of human KRT6A (AA: 253-352) expressed in E. Coli.
Mol wt	60kDa
Species reactivity	Others
Clonality	Monoclonal
Recommended application	WB,ICC,FCM
Concentration	N/A
Full name	N/A
Synonyms	KRT6A;K6A;K6C;K6D;PC3;CK6C;CK6D;CK-6C;CK-6E;KRT6C;KRT6D

This product is for research use only, not for use in human, therapeutic or diagnostic procedure.

Background

The protein encoded by this gene is a member of the keratin gene family. The type II cytokeratins consist of basic or neutral proteins which are arranged in pairs of heterotypic keratin chains coexpressed during differentiation of simple and stratified epithelial tissues. As many as six of this type II cytokeratin (KRT6) have been identified; the multiplicity of the genes is attributed to successive gene duplication events. The genes are expressed with family members KRT16 and/or KRT17 in the filiform papillae of the tongue, the stratified epithelial lining of oral mucosa and esophagus, the outer root sheath of hair follicles, and the glandular epithelia. This KRT6 gene in particular encodes the most abundant isoform. Mutations in these genes have been associated with pachyonychia congenita. In addition, peptides from the C-terminal region of the protein have antimicrobial activity against bacterial pathogens. The type II cytokeratins are clustered in a region of chromosome 12q12-q13.

Recommended Dilution

WB: 1:500 - 1:2000

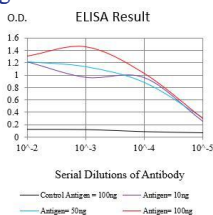
ICC: 1:200 - 1:1000

FCM: 1:200 - 1:400

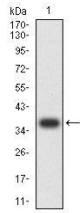
ELISA: 1:10000

Not yet tested in other applications.

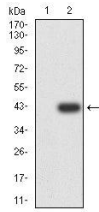
Images



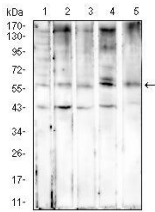
Black line: Control Antigen (100 ng);Purple line: Antigen (10ng); Blue line: Antigen (50 ng); Red line:Antigen (100 ng)



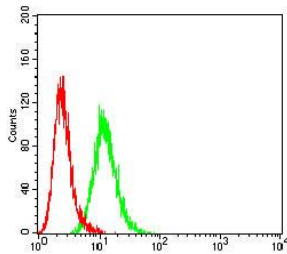
Western blot analysis using KRT6A mAb against human KRT6A (AA: 253-352) recombinant protein. (Expected MW is 37.2 kDa)



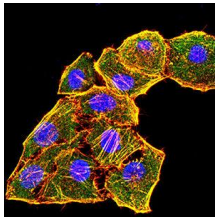
Western blot analysis using KRT6A mAb against HEK293-6e (1) and KRT6A (AA: 253-352)-hIgGFc transfected HEK293-6e (2) cell lysate.



Western blot analysis using KRT6A mouse mAb against HeLa (1), MCF-7 (2), SW480 (3), HepG2 (4), and T47D (5) cell lysate.



Flow cytometric analysis of HeLa cells using KRT6A mouse mAb (green) and negative control (red).



Immunofluorescence analysis of HeLa cells using KRT6A mouse mAb (green). Blue: DRAQ5 fluorescent DNA dye. Red: Actin filaments have been labeled with Alexa Fluor- 555 phalloidin. Secondary antibody from Fisher (Cat#: 35503)

Storage

Store at 4°C short term. Aliquot and store at -20°C long term.

501 Changsheng S Rd, Nanhu Dist, Jiaxing, Zhejiang, China

Tel: 86 21 31007137 | E-mail: save@bt-laboratory.com | www.bt-laboratory.com