

CD206 Monoclonal Antibody

Description

Product type	Antibody
Code	BT-MCA3398
Host	Mouse
Isotype	Mouse IgG2a
Size	100 μ L, 50 μ L
Immunogen	Purified recombinant fragment of human CD206 (AA: extra(19-218)) expressed in E. Coli.
Mol wt	166 kDa
Species reactivity	Others
Clonality	Monoclonal
Recommended application	IHC,FCM
Concentration	N/A
Full name	N/A
Synonyms	MMR;hMR;CD206;MRC1L1;CLEC13D;CLEC13DL;bA541I19.1

This product is for research use only, not for use in human, therapeutic or diagnostic procedure.

Background

The recognition of complex carbohydrate structures on glycoproteins is an important part of several biological processes, including cell-cell recognition, serum glycoprotein turnover, and neutralization of pathogens. The protein encoded by this gene is a type I membrane receptor that mediates the endocytosis of glycoproteins by macrophages. The protein has been shown to bind high-mannose structures on the surface of potentially pathogenic viruses, bacteria, and fungi so that they can be neutralized by phagocytic engulfment.[provided by RefSeq, Sep 2015]

Recommended Dilution

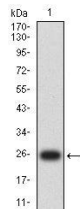
WB: 1:500 - 1:2000

IHC-p: 1:200 - 1:1000

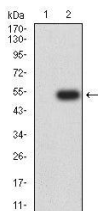
FCM: 1:200 - 1:400

Not yet tested in other applications.

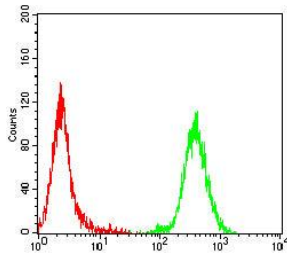
Images



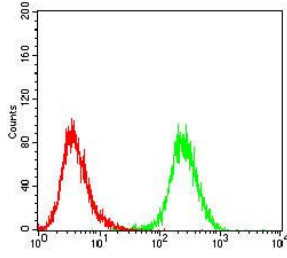
Western blot analysis using CD206 mAb against human CD206 (AA: extra(19-218)) recombinant protein. (Expected MW is 25.7 kDa)



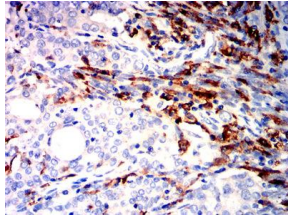
Western blot analysis using CD206 mAb against HEK293 (1) and CD206 (AA: extra(19-218))-hIgGFc transfected HEK293 (2) cell lysate.



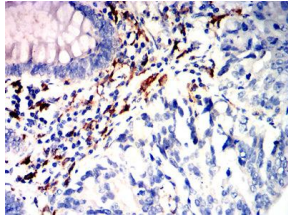
Flow cytometric analysis of MOLT4 cells using CD206 mouse mAb (green) and negative control (red).



Flow cytometric analysis of U937 cells using CD206 mouse mAb (green) and negative control (red).



Immunohistochemical analysis of paraffin-embedded cervical cancer tissues using CD206 mouse mAb with DAB staining.



Immunohistochemical analysis of paraffin-embedded rectal cancer tissues using CD206 mouse mAb with DAB staining.

Storage

Store at 4°C short term. Aliquot and store at -20°C long term.

501 Changsheng S Rd, Nanhu Dist, Jiaxing, Zhejiang, China

Tel: 86 21 31007137 | E-mail: save@bt-laboratory.com | www.bt-laboratory.com