

KI67 Monoclonal Antibody

Description

Product type	Antibody
Code	BT-MCA3414
Host	Mouse
Isotype	Mouse IgG1
Size	100 μ L, 50 μ L
Immunogen	Synthetic peptide corresponding to aa (CEDLAGFKELFQTPG) of human KI67, conjugated to KLH.
Mol wt	358kDa
Species reactivity	Human
Clonality	Monoclonal
Recommended application	WB,IHC
Concentration	N/A
Full name	N/A
Synonyms	KI1A;Ki-67;MKI67

This product is for research use only, not for use in human, therapeutic or diagnostic procedure.

Background

Ki67, also known as MKI67, is the prototypic cell cycle related nuclear protein, expressed by proliferating cells in all phases of the active cell cycle (G1, S, G2 and M phase). It is absent in resting (G0) cells. Ki67 antibodies are useful in establishing the cell growing fraction in neoplasms (immunohistochemically quantified by determining the number of Ki67 positive cells among the total number of resting cells = Ki67 index). In neoplastic tissues the prognostic value is comparable to the tritiated thymidine labelling index. The correlation between low Ki67 index and histologically low grade tumours is strong. Ki67 is routinely used as a neuronal marker of cell cycling and proliferation.

Recommended Dilution

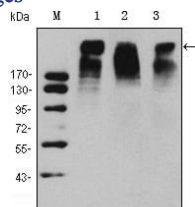
WB: 1:500 - 1:2000

IHC-p: 1:200 - 1:1000

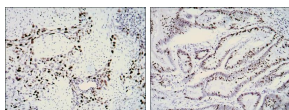
ELISA: 1:10000

Not yet tested in other applications.

Images



Western blot analysis using KI67 mouse mAb against HeLa (1), MCF-7 (2) and Raji (3) cell lysate.



Immunohistochemical analysis of paraffin-embedded lung cancer (left) and rectal cancer (right) using KI67 mouse mAb with DAB staining.

Storage

Store at 4°C short term. Aliquot and store at -20°C long term.

