

CSPG4 Monoclonal Antibody

Description

| | |
|--------------------------------|--|
| Product type | Antibody |
| Code | BT-MCA3422 |
| Host | Mouse |
| Isotype | Mouse IgG1 |
| Size | 100µL, 50µL |
| Immunogen | Purified recombinant fragment of human CSPG4 (AA: 2247-2308) expressed in E. Coli. |
| Mol wt | 250.0kDa |
| Species reactivity | Human |
| Clonality | Monoclonal |
| Recommended application | FCM |
| Concentration | N/A |
| Full name | N/A |
| Synonyms | NG2;MCSP;MCSPG;MSK16;HMW-MAA;MEL-CSPG |

This product is for research use only, not for use in human, therapeutic or diagnostic procedure.

Background

A human melanoma-associated chondroitin sulfate proteoglycan plays a role in stabilizing cell-substratum interactions during early events of melanoma cell spreading on endothelial basement membranes. CSPG4 represents an integral membrane chondroitin sulfate proteoglycan expressed by human malignant melanoma cells.

Recommended Dilution

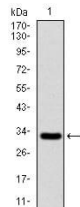
WB: 1:500 - 1:2000

FCM: 1:200 - 1:400

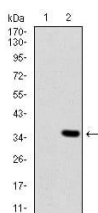
ELISA: 1:10000

Not yet tested in other applications.

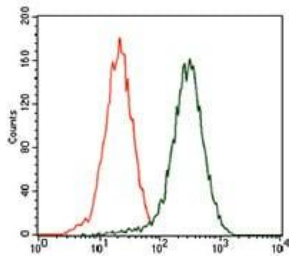
Images



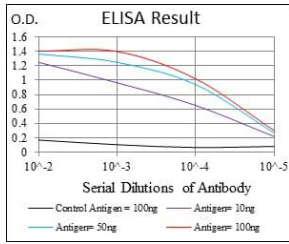
Western blot analysis using CSPG4 mAb against human CSPG4 recombinant protein. (Expected MW is 32.5 kDa)



Western blot analysis using CSPG4 mAb against HEK293 (1) and CSPG4 (AA: 2247-2308)-hIgGfc transfected HEK293 (2) cell lysate.



Flow cytometric analysis of HEK293 cells using CSPG4 mouse mAb (green) and negative control (red).



Black line: Control Antigen (100 ng); Purple line: Antigen(10ng); Blue line: Antigen (50 ng); Red line: Antigen (100 ng);

Storage

Store at 4°C short term. Aliquot and store at -20°C long term.

501 Changsheng S Rd, Nanhu Dist, Jiaxing, Zhejiang, China

Tel: 86 21 31007137 | E-mail: save@bt-laboratory.com | www.bt-laboratory.com