

## KBTBD8 Monoclonal Antibody

### Description

<b>Product type</b>	Antibody
<b>Code</b>	BT-MCA3430
<b>Host</b>	Mouse
<b>Isotype</b>	Mouse IgG1
<b>Size</b>	100µL, 50µL
<b>Immunogen</b>	Purified recombinant fragment of human KBTBD8 (AA: 264-464) expressed in E. Coli.
<b>Mol wt</b>	68.8kDa
<b>Species reactivity</b>	Human
<b>Clonality</b>	Monoclonal
<b>Recommended application</b>	WB,FCM
<b>Concentration</b>	N/A
<b>Full name</b>	N/A
<b>Synonyms</b>	TA-KRP

This product is for research use only, not for use in human, therapeutic or diagnostic procedure.

### Background

N/A

### Recommended Dilution

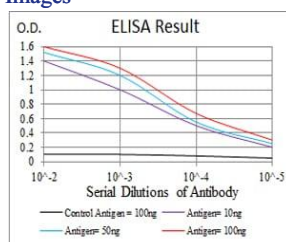
WB: 1:500 - 1:2000

FCM: 1:200 - 1:400

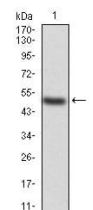
ELISA: 1:10000

Not yet tested in other applications.

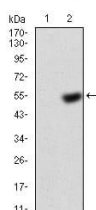
### Images



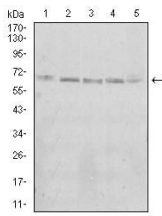
Black line: Control Antigen (100 ng); Purple line: Antigen(10ng); Blue line: Antigen (50 ng); Red line: Antigen (100 ng);



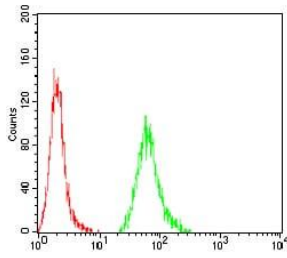
Western blot analysis using KBTBD8 mAb against human KBTBD8 (AA: 264-464) recombinant protein. (Expected MW is 48.7 kDa)



Western blot analysis using KBTBD8 mAb against HEK293 (1) and KBTBD8 (AA: 264-464)-hlgGfC transfected HEK293 (2) cell lysate.



Western blot analysis using KBTBD8 mouse mAb against A431 (1), Jurkat (2), HeLa (3), K562 (4), and HEK293 (5) cell lysate.



Flow cytometric analysis of A431 cells using KBTBD8 mouse mAb (green) and negative control (red).

### Storage

Store at 4°C short term. Aliquot and store at -20°C long term.

501 Changsheng S Rd, Nanhu Dist, Jiaxing, Zhejiang, China

Tel: 86 21 31007137 | E-mail: [save@bt-laboratory.com](mailto:save@bt-laboratory.com) | [www.bt-laboratory.com](http://www.bt-laboratory.com)